

# MCKERNS DEVELOPMENT

what will my releases look like ? (only first page of release is shown below)



**NEWS RELEASE**



**ONM&J ENGINEERS JOIN FORCES WITH WORLD RENOWNED ARQUITECTONICA AND THE RELATED GROUP 'THE SLADE' Brings Cutting Edge Design and Lifestyle To Downtown West Palm Beach Waterfront**

(WEST PALM BEACH/ORLANDO) – O’Donnell, Naccarato, Mignogna & Jackson (ONM&J) structural engineers, with offices in West Palm Beach and Orlando, announced today that they are under construction with the urban-sophisticated waterfront residences of The Slade.

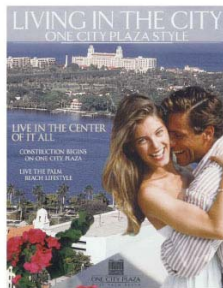
The Slade, a contemporary styled condominium on the downtown Flagler Drive waterfront of West Palm Beach, is a project of world-renowned architects and developers, Arquitectonica and The Related Group. The Slade is a 438,500 -s.f. structure with 321 parking spaces, and sits on a 1.36-acre site. The residence has 16 units per floor, the top two floors are the Lower Penthouse and the Penthouse.

-more-

321 15<sup>th</sup> Street, Suite 200, West Palm Beach, FL 32801  
37 North Orange Avenue, Suite 900B, Orlando, FL 32801 <http://www.onmj.net>



Publisher: Leslie McKerns  
McKerns Development  
[mckerns@bellsouth.net](mailto:mckerns@bellsouth.net)  
561-305-4264  
Lawrence S. Cohen, AIA  
[lsc@bcarchitects.com](mailto:lsc@bcarchitects.com)  
305-663-8182



**BC ARCHITECTS DESIGN ONE CITY PLAZA AND TWO CITY PLAZA FOR URBAN CHIC IN WEST PALM BEACH**

BCArchitects and Kolter Property Company Design Sister Projects in the Luxury Corridor of Downtown

(CORAL GABLES/MIAMI, FL) – BCArchitects, AIA, Inc. has designed two upscale high-end residential towers at the intersection of South Olive and Okeechobee Avenues in the heart of the luxury corridor of downtown West Palm Beach. One and Two City Plaza arises two blocks from City Plaza, the Kravis Center and the new downtown Convention Center. Both are around the corner from the Flagler Drive Intracoastal and minutes from Palm Beach and Worth Avenue. One and Two City Plaza, 15 and 20 stories respectively, will contain 800 units from \$200,000 to \$2 million. One City Plaza is now under construction with features including concierge services and a rooftop Sky Club

4942 Leflore Road, Suite 200, Coral Gables, FL 33146 <http://www.bccarchitects.com>  
Tel 305.663.8182 Fax 305.663.8882

Contact:  
Bill Mignogna, P.E., President, ONM&J  
[wmignogna@onmj.net](mailto:wmignogna@onmj.net)  
561-305-0948  
L. McKerns, Publicist  
[mckerns@bellsouth.net](mailto:mckerns@bellsouth.net)

**Full color 1-6PAGES  
Company Logo  
Full Story  
International Press Format  
Name linked to Developer  
Quotes  
Selected by Project Type  
Suitable for Multiple Uses:  
Handouts, Brochure  
Inserts, Direct Client  
Mailers, Newsletters,  
Posting on Websites**



Contact:  
Bill Mignogna, P.E., President, ONM&J  
[wmignogna@onmj.net](mailto:wmignogna@onmj.net)  
561-305-0948

**NEWS RELEASE**



**ONM&J ENGINEERS TRANSFORM DOWNTOWN BOCA RATON ROYAL PALM PLAZA Brings New Urbanism to Downtown Boca Raton**

(WEST PALM BEACH/ORLANDO) – O’Donnell, Naccarato, Mignogna & Jackson (ONM&J) structural engineers, with offices in West Palm Beach and Orlando, announced today that they are under construction with Onsen Developer, Investment Limited, to transform Royal Palm Plaza, a 15-acre site and soon shopping center in Boca Raton. Boca Raton residents Jim and Maria Hammann own Royal Palm Plaza, Investments Ltd., also of Boca Raton, is the property manager. Expected completion date is February 2004.

Royal Palm Plaza, Phase 1, is a 9 story and penthouse retail use development consisting of 100 luxurious retail units, 25,000 sq. ft. of prime retail space, 35,000 sq. ft. of office space and a parking structure for approximately 470 cars. The Royal Palm Plaza project is a U-shaped structure with apartments, retail, restaurant and office space wrapping around the parking deck, topped with luxurious amenities, including heated swimming pool, great lawn, clubhouse, and paved walking area. Adjacent to this is a fully equipped athletic club with tennis courts.

37 North Orange Avenue, Suite 770, Orlando, FL 32801 <http://www.onmj.net>  
321 15<sup>th</sup> Street, Suite 200, West Palm Beach, FL 32801



FOR IMMEDIATE RELEASE



**ONM&J ENGINEERS 'URBAN ALTERNATE' ONM&J AND WORLD RENOWNED ARCHITECTONICA AND THE RELATED GROUP 'THE SLADE' Brings Cutting Edge Design and Lifestyle To Downtown West Palm Beach Waterfront**

(WEST PALM BEACH/ORLANDO, FLORIDA) – O’Donnell, Naccarato, Mignogna & Jackson (ONM&J) structural engineers, with offices in West Palm Beach and Orlando, announced today that they are under construction with the urban-sophisticated waterfront residences of The Slade. The Slade, a contemporary styled condominium on the downtown Flagler Drive waterfront of West Palm Beach, is a project of world-renowned architects and developers, Arquitectonica and The Related Group. The Slade is a 438,500 -s.f. structure with 321 parking spaces, and sits on a 1.36-acre site. The residence has 16 units per floor, the top two floors are the Lower Penthouse and the Penthouse.

321 15<sup>th</sup> Street, Suite 200, West Palm Beach, FL 32801 <http://www.onmj.net>



FOR IMMEDIATE RELEASE



**ONM&J ENGINEERS PERFECT 'URBAN ALTERNATE' ONM&J AND WORLD RENOWNED ARCHITECTONICA AND THE RELATED GROUP 'THE SLADE' Brings Cutting Edge Design and Lifestyle To Downtown West Palm Beach Waterfront**

(WEST PALM BEACH/ORLANDO, FLORIDA) – O’Donnell, Naccarato, Mignogna & Jackson (ONM&J) structural engineers, with offices in West Palm Beach and Orlando, announced today that they are under construction with the urban-sophisticated waterfront residences of The Slade. The Slade, a contemporary styled condominium on the downtown Flagler Drive waterfront of West Palm Beach, is a project of world-renowned architects and developers, Arquitectonica and The Related Group. The Slade is a 438,500 -s.f. structure with 321 parking spaces, and sits on a 1.36-acre site. The residence has 16 units per floor, the top two floors are the Lower Penthouse and the Penthouse.

321 15<sup>th</sup> Street, Suite 200, West Palm Beach, FL 32801 <http://www.onmj.net>



FOR IMMEDIATE RELEASE

**ONM&J ANNOUNCES 'THE LANDMARK'**



**'THE LANDMARK' BRINGS LUXURY HIGH RISE LIVING TO PALM BEACH GARDENS, FL**

(WEST PALM BEACH/ORLANDO, FLORIDA) – O’Donnell, Naccarato, Mignogna & Jackson (ONM&J) structural engineers, with offices in West Palm Beach and Orlando, announced today that they have secured the design contract for Palm Beach Gardens only luxury high rise condominium, The Landmark for HomeDevco. The Landmark, at 3600 Gardens Boulevard in Palm Beach Gardens, FL, is a mix of luxury Mediterranean-inspired condominiums developed by HomeDevco featuring 160 residences, from 1,870 sf to more than 5,000 sf, all within walking distance of Downtown at the Gardens. The upscale project is located on the 60 -acre parcel bordered by the Gardens Mall to the east and Alternata AIA to the west.

321 15<sup>th</sup> Street, Suite 200, West Palm Beach, FL 32801  
37 North Orange Avenue, Suite 900B, Orlando, FL 32801 <http://www.onmj.net>