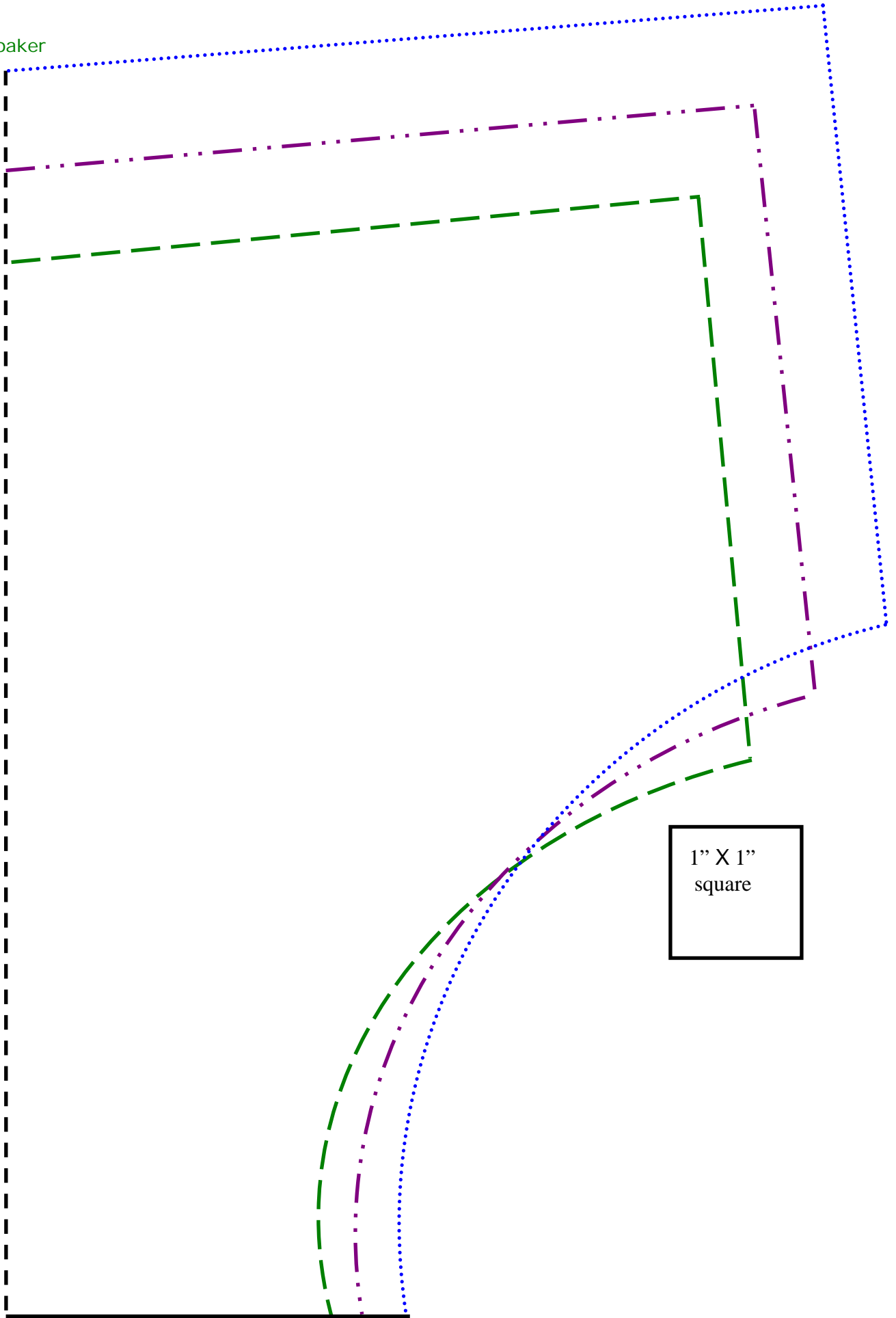


Front of the soaker



1" X 1"
square

XLarge r-20.5", w-19"-20.5", thigh-11"-13"
XXLarge r-22", w-20"-22.5", thigh-12"- 13"
XXXLarge r-23.5", w-22"-24.5", thigh-13"-14"

Waistband:

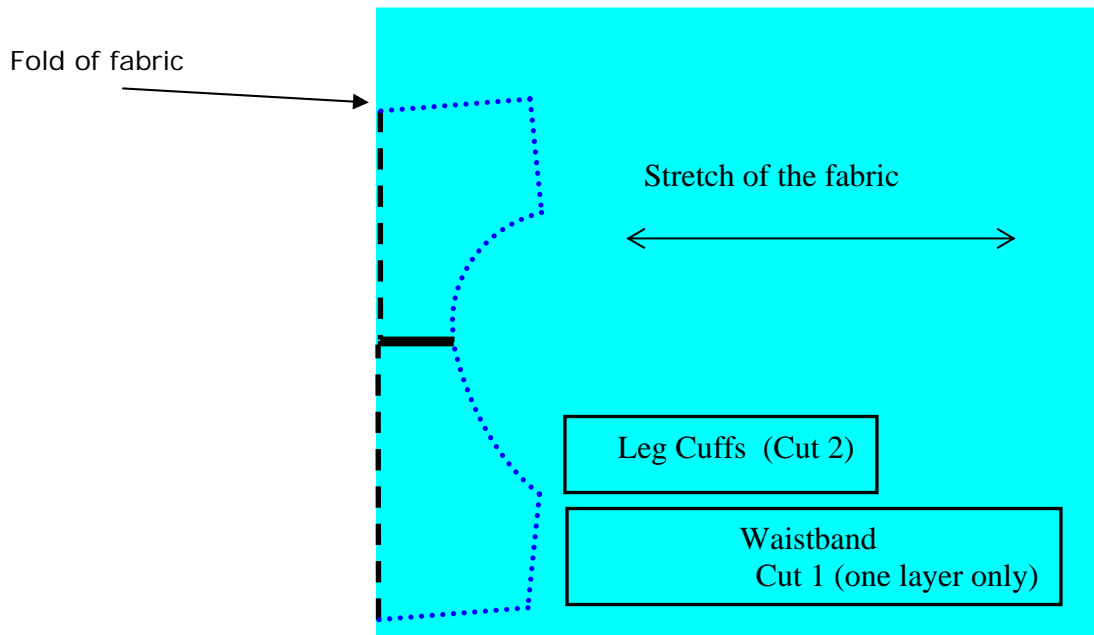
Cut a rectangle measuring 19.5" by 4" for the XL soaker 20.5" by 4" for the XXL soaker, and 22.5" by 4" for the XXXL soaker. Make sure the stretch is along the longest measurement.

Leg Cuffs:

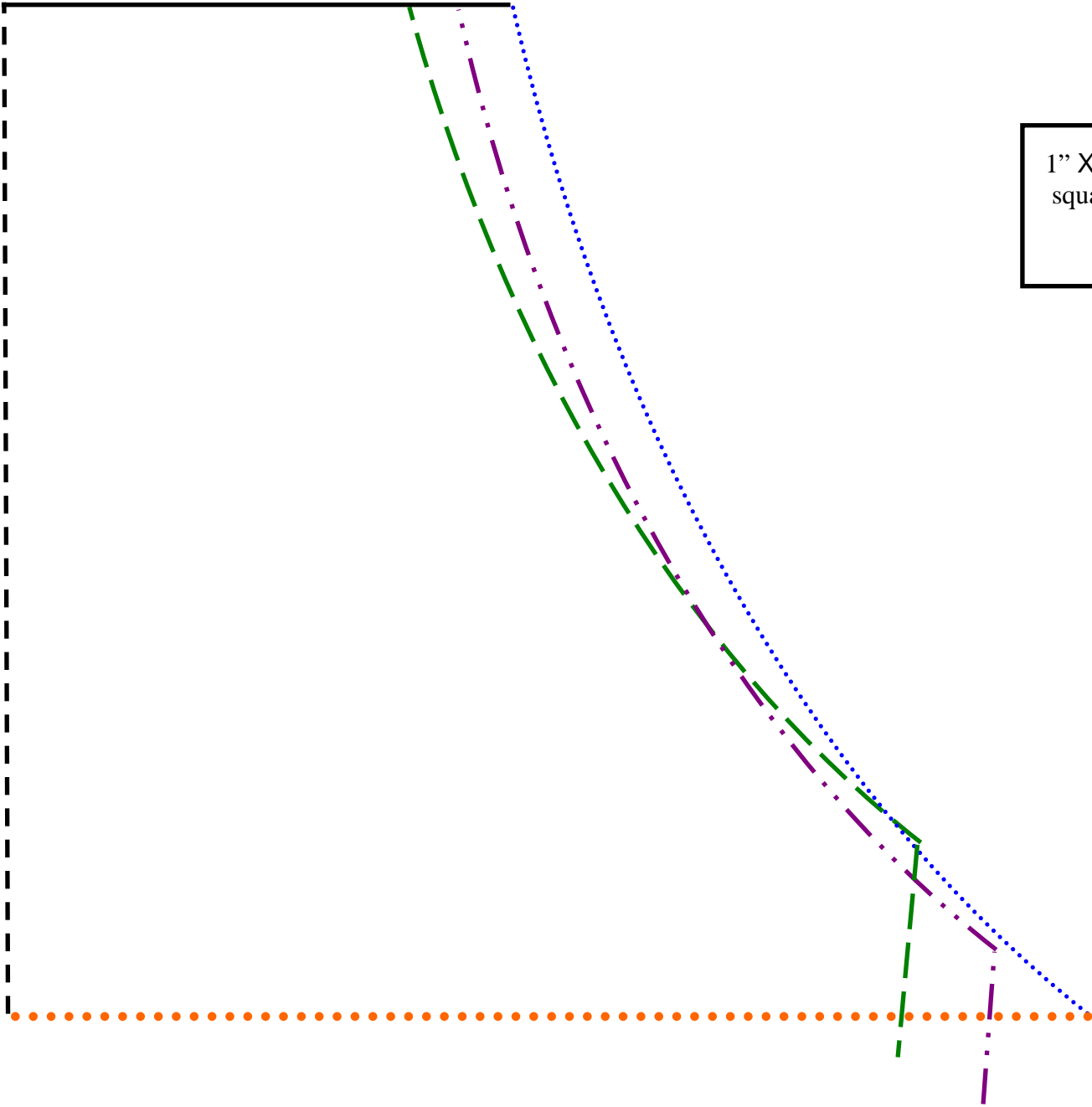
Cut rectangles measuring 11.5" by 2.5" for the XL soaker, 12.5" by 3" for the XXL soaker, and 13.5" by 3" for the XXXL soaker. Make sure the stretch is along the longest measurement.

Here is a sample layout for placing the pattern pieces on the fabric.

The fabric does not need to be folded for cutting the waistband and leg cuffs.

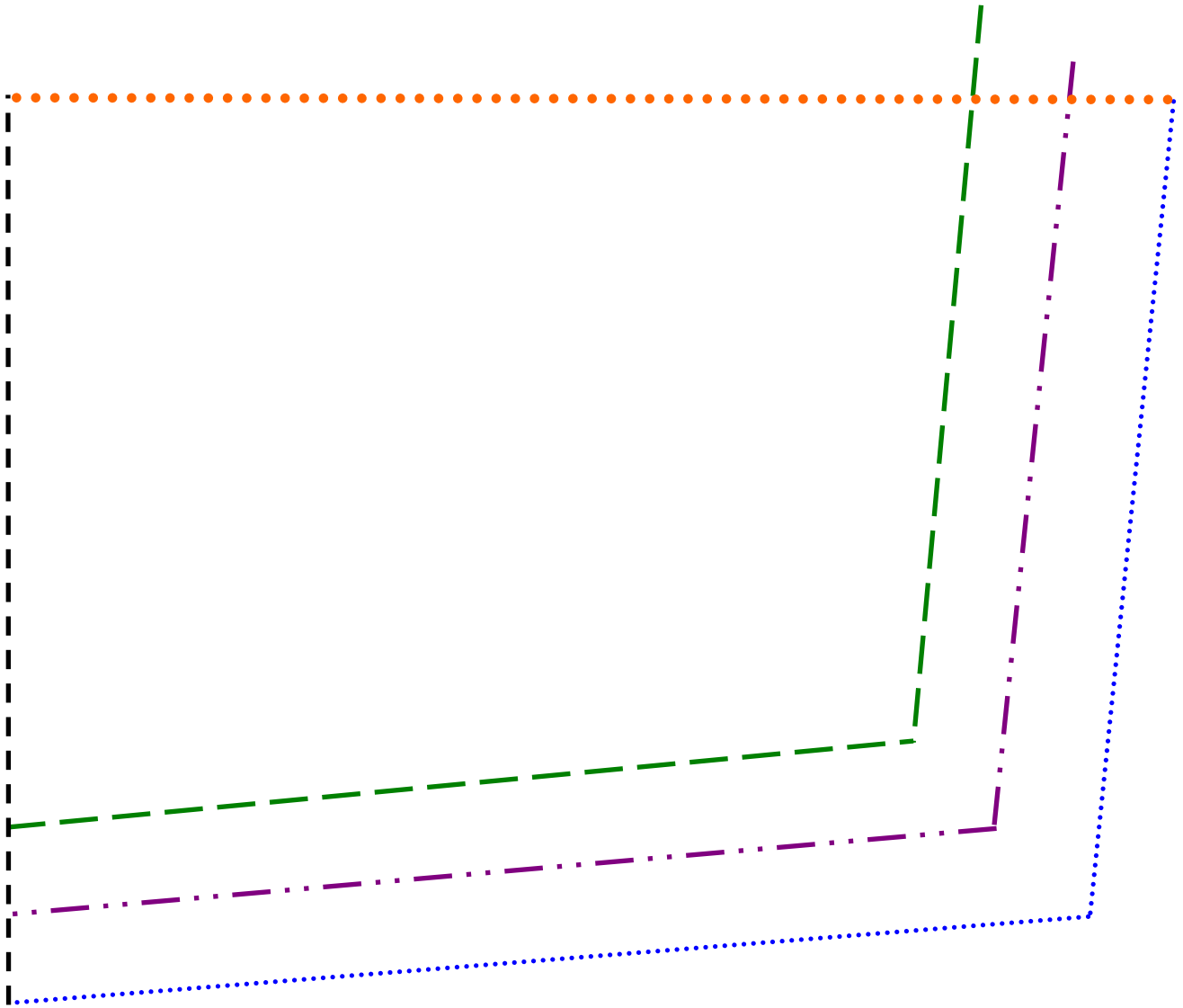


Back of the soaker (tape to other part of back of the soaker at the orange dotted line)



1" X 1"
square

Back of the soaker (tape to other part of back of the soaker at the orange dotted line)



1" X 1"
square