

"THE VEGAS 3"

Luciano's Lake Pearl Wrentham, MA

Thursday, April 23, 2009

\$59.00 per person with transportation

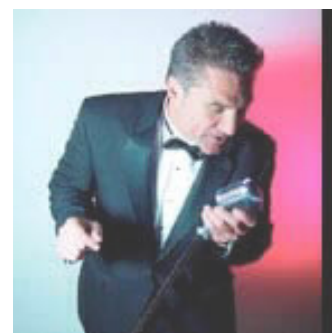
\$42.00 per person without transportation



Lunch included at Luciano's before the show. Luncheon Choices:
Chicken Francese or Fresh Broiled Boston Schrod.

The [VEGAS 3](#) is a [LAS VEGAS STYLE SHOW](#) with a contemporary twist featuring [Patrick Tobin](#), known for his international touring Tribute to Frank Sinatra, nine time international award winning Elvis Presley tribute artist [Ray Guillemette Jr.](#), known for his current show - A Ray of Elvis, and Las Vegas style singer / entertainer [Jimmy Mazz](#), known for his international touring show Crooning Vegas Style. These three worldwide entertainers currently tour indi-

vidually with their respective shows, or come together to impress audiences around the world as The Vegas 3. Their show is comprised of an interesting and very carefully chosen song list that indulges amusing off the cuff humor; funny on-stage antics & props, spontaneous happenings, ample audience interaction and participation.



They perform many of the great old classics & standards, but with a modern twist. Then, they'll mix in some of today's contemporary music as well. The show reflects the entertainment of today, but with an undeniable feeling of the old 60s Rat Pack days. And as Patrick sings Frank, and Jimmy croons Deano, Rays Sammy Davis Jr. adds an element to this trio that makes one think that Elvis should have part of that elite group back at the Sands Hotel in Las Vegas. But the show moves along way beyond these

Vegas crooners. You'll hear many great songs by artists like Louie Armstrong, Eddie Cantor, The Hollies, Neil Diamond and Michael Buble, just to name a few. But that's not all folks! With all this fun and excitement on-stage there's also harmony. Great 3 part harmony. Combined with their interesting and unusual song arrangements, these three blend in beautiful harmony, which brings a very contemporary twist to their show.

