

Caution: Please note that your copy/access to our website is for your exclusive use only. Any attempt to share your access to our website or forwarding your copy to a non-subscriber will disqualify your membership and we will be compelled to stop your supply and forfeit your subscription thereafter without any refund to you.

GLOBAL INDICES

SENSEX	15,670.31	+282.35	+1.83%
NIFTY	4,636.45	+65.00	+1.42%
HANG SENG	20,573.33	+339.25	+1.68%
NIKKEI 225	10,356.83	+191.62	+1.89%
FTSE 100	4,612.46	-19.15	-0.41%
NASDAQ	1,978.50	-5.80	-0.29%
DOW JONES	9,171.61	+17.15	+0.19%
DAX	5,332.14	-28.52	-0.53%
CAC 40	3,426.27	-9.22	-0.27%

NIFTY CHART (WEEKLY VIEW)



NIFTY

DATE – 3rd AUG 2009 TO 9th AUG 2009:- IN THE LAST WEEK AFTER A LONG STRUGGLE NIFTY MANAGED TO CLOSE ABOVE THE DANGER LEVEL AND MADE A HIGH AROUND 4670 AND FINALLY CLOSED AT 4636.45. BUT THE QUESTION IS THAT THIS UPRALLY WOULD BE SUSTAINABLE OR NOT.

THE ANSWER IS NOT EASY AS AFTER CLOSING ABOVE THE VITAL LEVEL THE BUYING INTEREST OF INVESTORS/TRADER WERE NOT SATISFACTORY. THOUGH THE FIIs BUYING IS QUITE POSITIVE. HOWEVER THE VOLUME IS NOT UP TO THE LEVEL .THE CLOSING OF NIFTY IS ENOUGH POSITIVE WHICH INDICATES THE MARKET WILL GO UP BUT THE VOLUME HAS NOT CONFIRMED THE RALLY. SO IF THE VOLUME WILL COME IN THE MARKET, IT IS CONFIRMED THAT THE MARKET WILL GO UP.

SO WE HAVE TO UNDERSTAND THE MOVEMENT OF NIFTY AS WELL AS VOLUME WHICH WILL HELP THE MOVEMENT OF MARKET. FIRST UNDERSTANDS THE SUPPORTS AND RESISTANCE OF NIFTY.

RESISTANCE

ON WEEKLY BASIS THE NIFTY IS IN A RANGE OF 4693 TO 4571. IN NEAR DAYS NIFTY RESIST AT 4670.4693 ZONES. UNLESS NIFTY CLOSE ABOVE 4700 NIFTY WOULD NOT GET EXTRA MOMENTUM AND THERE IS A POSSIBILITY OF FAILURE THE RALLY. ONCE NIFTY CROSSES THE 4700 LEVEL THE NEW BUYING CYCLE WILL START AND WE WILL GAIN UPTO 4752.4835.4908 LEVELS.

TREND DECIDER

TREND DECIDER MEANS A CERTAIN LEVEL ABOVE WHICH MARKET LOOKS GOOD (APPARENTLY BUT NOT CONFIRMED) AND BELOW WHICH MARKET LOOKS BAD (APPARENTLY BUT NOT CONFIRMED).

NIFTY TREND IS 4571. ABOVE WHICH UPTREND IS INTACT AND PEOPLE LIKE TO BUY ON DIPS BUT BELOW IT PEOPLE ARE NOT INTERESTED TO BUY, THEREFORE MARKET LOSES ITS MOMENTUM.

SUPPORTS

IN THE LOWER SIDE NIFTY GOOD SUPPORT AT 4571, 4532. BREAK BELOW OR CLOSING BELOW 4505 LEVEL MARKET WILL TAKE DOWN TREND AND IT IS MATTER OF CONCERN.

SUMMARY

Market trading range – 4693-4571.

For upmove confirmation closing needed above 4700 zone.

For down side confirmation closing below 4532 zone.

Profit booking zone 4670-4690 zone with a stop loss 4700.

(As selling expected from 4693 so book profit and wait for dips)

Buying zone 4571 zone with a stop loss 4532.

READ CAREFULLY

(Reminder of last week comment as the possibilities are not yet overcome)

WE ARE NOT YET CONFIRMED THAT BULL MARKET HAS ALREADY BEEN STARTED OR NOT BUT THE CHART (IF GLOBAL CUES SUPPORTS US) SHOWS THAT MARKET LIKELY TO TEST 5230 ZONE SUBJECT TO CERTAIN CONDITIONS-

- 1) MARKET HAS TO MANAGE THE SHORT TERM CORRECTION THAT WILL OCCUR DUE TO RELIANCE'S DISAPPOINTMENT RESULT.**
- 2) NIFTY WILL NOT BREAK THE LEVEL OF 4200 BY CLOSING FOR TWO DAYS.**
- 3) AS MARKET IS IN OVERBOUGHT POSITION SHORT TERM CORRECTION LIKELY TO HAPPEN THIS WEEK SO WE WILL BUY ON DIPS WITH A STOP LOSS OF 4200(FOR STOCK PURPOSE).**

TRADING STYLE OF MOST WANTED STOCKS (WEEKLY VIEW)

It is not recommended to buy/dell just manage your portfolio if you hold these stocks

SL	STOCKS NAME	TRADING RANGE	BREAKOUT LEVEL	BREAKDOWN LEVEL
1	CHAMBL	50-60	62	48
2	GVKPIL	41-45	46	40
3	HCC	113-120	121	110
4	IFCI	45-52	55	43
5	JPASSOCIAT	228-250	252	222
6	IPHYDRO	87-78	88	76
7	NAGARFERT	32-45	46	30
8	RPL	115-129	130	112

9	RNRL	80-87	88	78
10	ROLTA	142-165	-	138
11	SAIL	188-165	190	182
12	SATYAM	110-90	112	88
13	SESAGOA	224-248	252	220
14	SUZLON	94-105	106	88
15	UNITECH	87-98	101	86

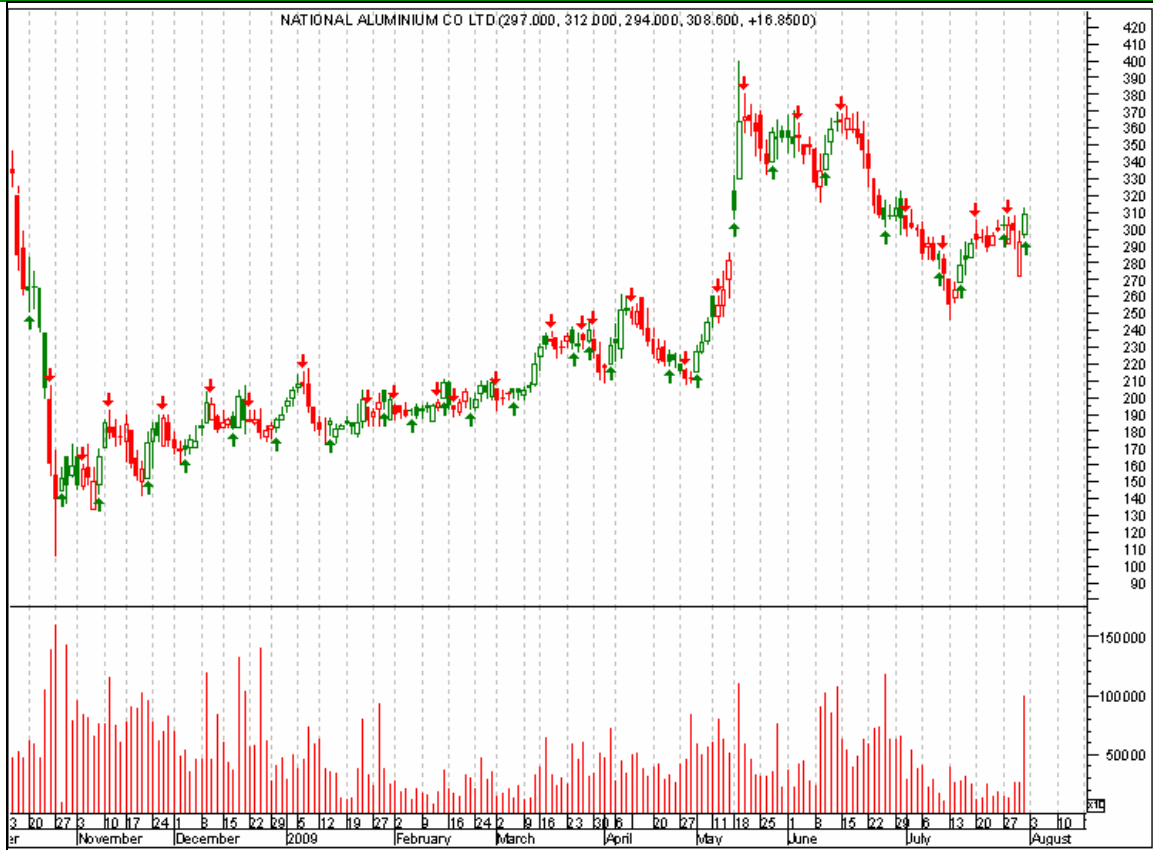
NB--- THE SUPPORTS AND RESISTANCE GIVEN ON WEEKLY BASIS.REMEMBER THE CONDITIONS-

- 1) BREAKOUT AND BREAKDOWN VALID FOR CLOSING BASIS.
- 2) WE ARE NOT GONING TO RECOMMEND THIS STOCK TO INVEST, JUST MANAGE YOUR STOCKS IF YOU HAVE FOLLOWING THE LEVEL GIVEN.
- 3) BREAKOUT AND BREAKDOWN SUBJET TO NIFTY CONDITION THAT MEANS IF NIFTY IS IN BREAKDOWN LEVEL BUT STOCK IS IN BREAKOUT LEVEL ,THEN THE BREAKOUT WOULD NOT BE VALID AND VICE VERSA

PERFORMANCES OF LAST WEEK		% UP
LITL	From 409 – 458	12.10
TATAMOTORS	From 356 - 425	19.40
SUZLON	From 98-104	6.10
BANKRAJAS	From 65 - 71	9.20
BHARATFORG	From 172 - 215	20
EDUCOM	From 4150-4350	4.80
MLL	From 59-64	8.45

TRADING SPOTLIGHT

**NATIONALUM, ADSL, INDIAINFO, GESHIP,
BHUSANSTL, EDELWEISS**



NATIONALUM - THE TREND DECIDER POINT IS 302 ZONE.SO ABOVE WHICH BUYING WILL ATTRACT AND FOR UPMOVE THE STOCK CAN GO UPTO 322.330.CLOSING ABOVE 332 THE STOCK CAN JUMP UPTO 352 . ? LEVEL. SO YOU HAVE TO BUY ABOVE 302.THE STOP LOSS SHOULD BE 286.

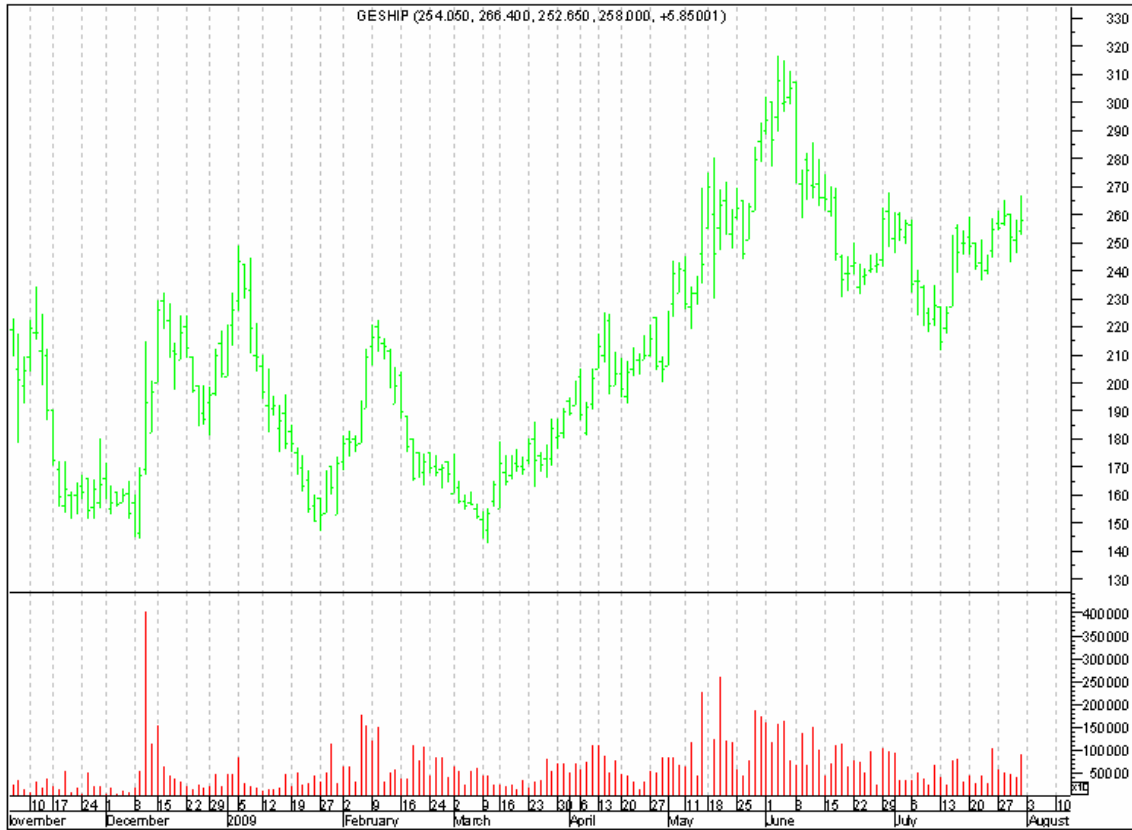


ADSL - AFTER A LONG CONSOLIDATION THIS STOCK CLOSED IN A POSITIVE NOTE. ON WEEKLY BASIS THE TREND DECIDER POINT IS 342. SO YOU HAVE TO BUY THE STOCK ABOVE 342 WITH A STOP LOSS 324 AND IN UPPER SIDE, LEVEL TO WATCH 370.382. TRADE ABOVE 382 STOCK WILL KISS 414 LEVEL.

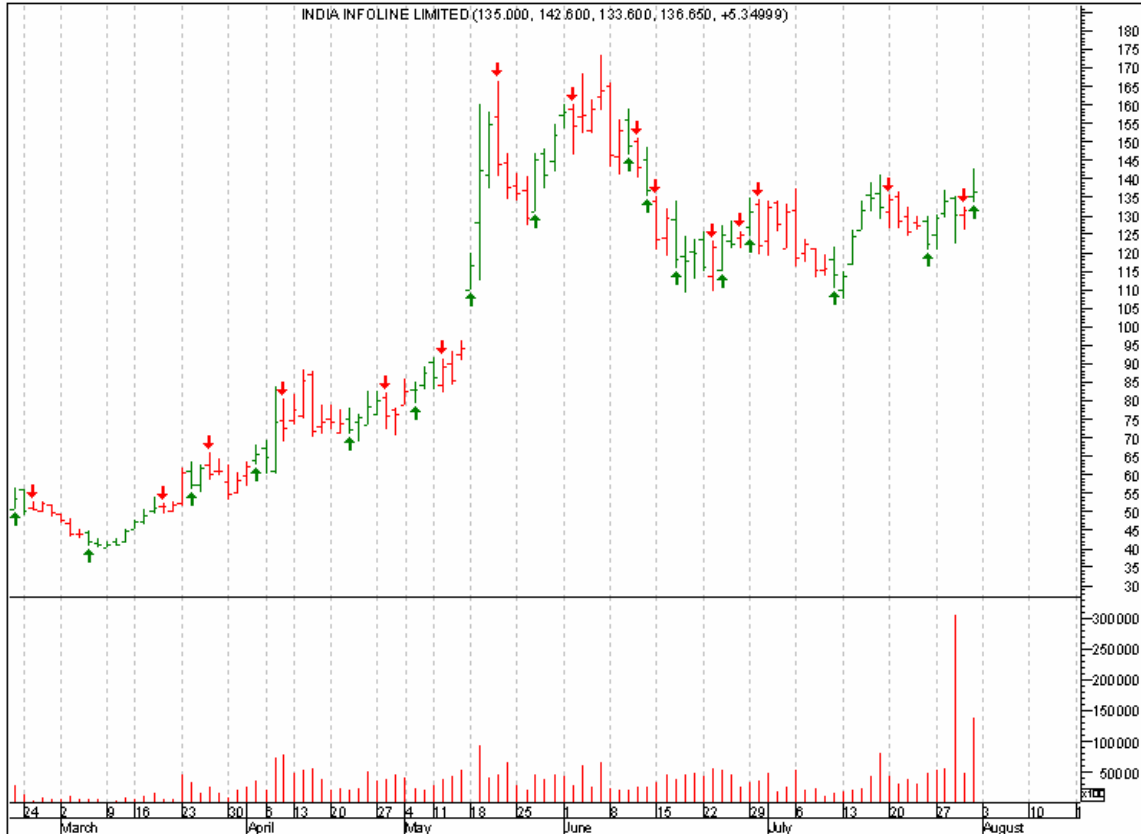


BHUSHANSTL --THE TREND DECIDER POINT IS 745.SO GOOD BUYING ZONE 745-725 AND YOUR STOP LOSS SHOULD BE 695.FOR UPSIDE RALLY YOUR SELLING LEVEL SHOULD BE 805.MIND IT ANY CLOSING ABOVE 805 LEVEL THIS STOCK WOULD GET EXTRA MOMENTUM AND LEVEL TO WATVH 844 .872.??.





GESHIP - 245-250 IS GOOD BUYING ZONE WITH A STOP LOSS 236 .FOR UPMOVE 270.TRADE ABOVE 272 THERE IS A POSSIBILITY THAT THIS STOCK CAN GO UP TO 286.307.? LEVELS. SHIPPING SECTOR MAY PERFORM, SO CLOSE EYE ON OTHER STOCK ALSO LIKE, SCI ETC.



INDIAINFOLINE - THIS STOCK TOOK A BREAKOUT.GOOD BUYING ZONE IS 126-133 ZONE WITH A STOP LOSS 116.FOR UPMOVE 145.158.?

THE TWO STOCKS TATACOMMUNICATION AND JET AIRWAYS ALSO LOOKING GOOD FROM THERE RISK REWARD RATION.THOUGH THESE STOCKS ARE NOT CHARTICALLY SOUND.

NOTE

CAUTION--- ALL THESE LEVELS ARE VALID AND BUYING IS ALLOWED UNTIL NIFTY ABOVE 4532 LEVEL.

HAPPY TRADING AHEAD

From----

ISM TEAM