

Caution: Please note that your copy/access to our website is for your exclusive use only. Any attempt to share your access to our website or forwarding your copy to a non-subscriber will disqualify your membership and we will be compelled to stop your supply and forfeit your subscription thereafter without any refund to you.

EXCITING NEWS
(CURRENT MESSAGE COST)

DEAR ALL, TO KEEP THE DEMAND INTACT & HUGE CLIENT REQUEST WE HAVE DECIDED NOT TO INCREASE ANY MESSAGE COST RIGHT NOW. ALL THE RATES REMAIN SAME AS IT WAS EARLIER.

| | SCHEMES | RATE(RS) | |
|--|----------------------------|-----------------|--|
| | CASH | 200 | |
| | CASH + NIFTY/FUTURE | 500 | |
| | NIFTY FUTURE | 350 | |

VISIT- www.indianstockmarket.webs.com

**FOR MORE DETAILS VISIT-
<http://indianstockmarket.webs.com/subscription.htm>**

NB: - THOSE WHO REGISTERED FOR TRIAL PLEASE WAIT AS THERE ARE LOTS OF TRIAL ARE PENDING.

FOR TRIAL - <http://indianstockmarket.webs.com/freetrialoncashmarke.htm>

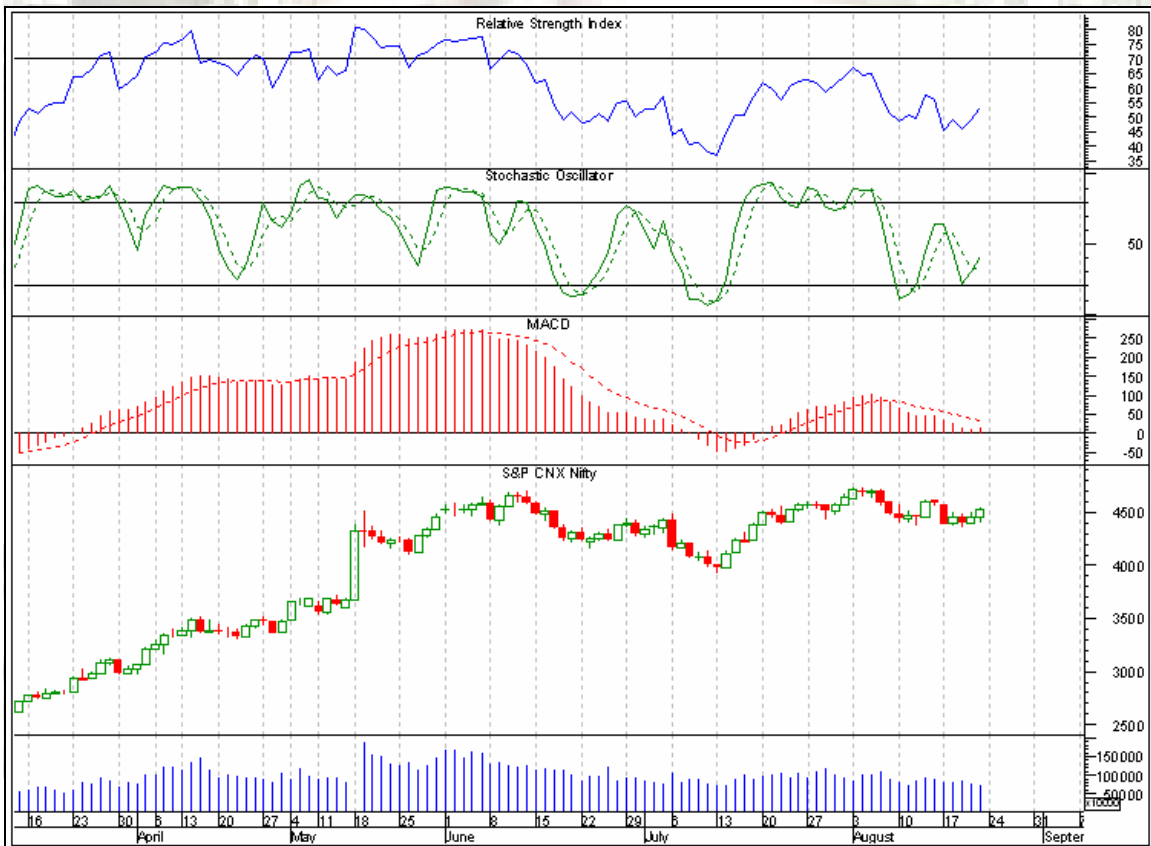
FOR SUBSCRIPTION- <http://indianstockmarket.webs.com/subscription.htm>

CONTACT US - trialismteam@gmail.com

GLOBAL INDICES

| | | | |
|------------|-----------|---------|--------|
| SENSEX | 15,240.83 | +228.51 | +1.52% |
| NIFTY | 4,528.80 | +75.35 | +1.69% |
| HANG SENG | 20,199.02 | -129.84 | -0.64% |
| NIKKEI 225 | 10,238.20 | -145.21 | -1.40% |
| FTSE 100 | 4,850.89 | +94.31 | +1.98% |
| NASDAQ | 2,020.90 | +31.68 | +1.59% |
| DOW JONES | 9,505.96 | +155.91 | +1.67% |
| DAX | 5,462.74 | +151.68 | +2.86% |
| CAC 40 | 3,615.81 | +110.49 | +3.15% |

NIFTY CHART (WEEKLY VIEW)



NIFTY

(24th AUG 2009 TO 30th AUG 2009)

(CONCENTRATE ON PROTECT MONEY RATHER MAKING MONEY)

BEHAVIOUR OF NIFTY IN LAST WEEK

IN THE LAST WEEK NIFTY WAS IN A RANGE OF 4579-4353. AFTER A LONG STRUGGLE NIFTY MANAGED TO CLOSE ABOVE THE 4500 MARK AND MADE A HIGH AROUND 4539 AND FINALLY CLOSED AT 4528.80. THOUGH PROFIT BOOKING SEEN IN THE MARKET BUT AT THE END OF THE WEEK CLOSED IN POSITIVE NOTE BUT UNABLE TO CLOSE HIGHER WEEKLY POINT OF VIEW.

WHAT THE CHART SAYS

THE CHART OF NIFTY SAYS THAT MARKET LIKELY TO GO HIGHER AND TRY TO RETEST 4620 ZONE .BUT THE QUESTION IS THAT WHEATHER NIFTY RETEST 4730 MARK OR NOT, OUR ANSWER IS THAT NIFTY LIKELY TO TEST 4730 IF GLOBAL CUES SUPPORTS US.BUT IT IS QUITE TOUGH TO SAY THAT NIFTY WILL CLOSE ABOVE 4730 AND GO HIGHER THEREAFTER, BUT CLOSING POINT OF VIEW WE CAN HOPE SO.

RESISTANCE

ON WEEKLY BASIS THE NIFTY IS IN A RANGE OF 4558 TO 4620. IN NEAR DAYS NIFTY RESIST AT 4578,4620 ZONES. UNLESS NIFTY CLOSE ABOVE 4620 NIFTY WOULD NOT GET EXTRA MOMENTUM .ONCE NIFTY CROSSES THE 4620 LEVEL WITH VOLUME THE BUYING INTEREST WILL AGAIN GENERATE AND THE STORY OF 4730 AND THERE AFTER 4900 WILL AGAIN START.

TREND DECIDER

TREND DECIDER MEANS A CERTAIN LEVEL ABOVE WHICH MARKET LOOKS GOOD (APPARENTLY BUT NOT CONFIRMED) AND BELOW WHICH MARKET LOOKS BAD (APPARENTLY BUT NOT CONFIRMED).

NIFTY TREND IS 4492.ABOVE WHICH UPTREND IS INTACT AND PEOPLE LIKE TO BUY ON DIPS BUT BELOW IT PEOPLE ARE NOT INTERESTED TO BUY, THEREFORE MARKET LOSES ITS MOMENTUM.

SUPPORTS

IN THE LOWER SIDE NIFTY GOOD SUPPORT AT 4458, 4400 BREAKS BELOW OR CLOSING BELOW 4380 LEVEL MARKET WILL TAKE DOWN TREND AND IT IS MATTER OF CONCERN.

SUMMARY

Market trading range- 4579-4353

For upmove confirmation closing needed above 4510 zone (ALREADY CLOSED).

For down side confirmation closing below 4380 zone.

Profit booking zone 4580-4600 with a stop loss 4620.

(As selling /profit booking expected from 4580-4600. So book profit and wait for dips)

Buying zone 4490 zones with a stop loss 4400

INTRADAY

RECOMMENDED AS ON MONDAY (17.08.2009)

PREVIOUS WEEK PERFORMANCE CHECK

| SCRIPTS | BUYING LEVEL | SL | HIGH | % GAIN |
|-----------------|---------------------|------------|-------------|---------------|
| PROVOGUE | ABOVE 66 | 62 | 68.3 | 3.5 % |
| AFL | ABOVE 55 | 51 | 62.7 | 14 % |
| NIITTECH | ABOVE 129 | 122 | 145 | 12.4 % |
| MANINDS | ABOVE 49 | 47 | 52.8 | 7.8% |
| ADSL | ABOVE 409 | 397 | 496 | 21% |

INTRADAY

STOCKS LOOKING HOT FOR 24.08.2009

(Buying and selling level and target for our subscribed members only)

| STOCKS NAME | CMP |
|-------------|-----|
| HARRMALAYA | 103 |
| ASTRAMICRO | 76 |
| INGERRAND | 311 |
| JAYSREETEA | 248 |
| MBECL | 178 |
| MCLEODRUSS | 174 |
| ENIL | 208 |
| RESURGERE | 86 |

TRADING STYLE OF MOST WANTED STOCKS (WEEKLY VIEW)

(It is not recommended to buy/sell just manage your portfolio if you hold these stocks)

| SL | STOCKS NAME | TRADING RANGE | BREAKOUT LEVEL | BREAKDOWN LEVEL |
|----|-------------|---------------|----------------|-----------------|
| 1 | CHAMBL | 46-55 | 56 | 45 |
| 2 | GVKPIL | 43-48 | 51 | 41 |
| 3 | HCC | 100-110 | 112 | 99 |
| 4 | IFCI | 49-54 | 55 | 46 |
| 5 | JPASSOCIAT | 201-214 | 216 | 200 |
| 6 | JPHYDRO | 78-84 | 85 | 76 |
| 7 | NAGARFER | 30-35 | 36 | 28 |
| 8 | RPL | 121-115 | 116 | 114 |
| 9 | RNRL | 75-87 | 88 | 74 |
| 10 | ROLTA | 170-150 | 171 | 148 |

| | | | | |
|----|---------|---------|-----|-----|
| 11 | SAIL | 168-158 | 170 | 155 |
| 12 | SATYAM | 110-90 | 112 | 88 |
| 13 | SESAGOA | 217-232 | 234 | 215 |
| 14 | SUZLON | 80-92 | 96 | 78 |
| 15 | UNITECH | 85-98 | 100 | 82 |

NB--- THE SUPPORTS AND RESISTANCE GIVEN ON WEEKLY BASIS.REMEMBER THE CONDITIONS-

- 1) BREAKOUT AND BREAKDOWN VALID FOR CLOSING BASIS.
- 2) WE ARE NOT GONING TO RECOMMEND THIS STOCK TO INVEST, JUST MANAGE YOUR STOCKS IF YOU HAVE FOLLOWING THE LEVEL GIVEN.
- 3) BREAKOUT AND BREAKDOWN SUBJET TO NIFTY CONDITION THAT MEANS IF NIFTY IS IN BREAKDOWN LEVEL BUT STOCK IS IN BREAKOUT LEVEL ,THEN THE BREAKOUT WOULD NOT BE VALID AND VICE VERSA

**LAST WEEK PERFORMACE(short term calls)
(WEEKLY BASIS)**

| STOCK NAME | % UP |
|--------------------|---------------------|
| IGL | 4.5 % |
| NIITTECH | 12.4 % |
| JETAIRWAYS | (NOT PERFORMED YET) |
| NATCOPHARMA | 13.26 % |
| OILCOUNTRY | 30.4 % |
| NUCLEUS | 14 % |

OUR PERFORMANCE**ON JOURNAL BASIS**

| PREVIOUS WEEK PERFORMANCE (WEEKLY BASIS) | | PREVIOUS PERFORMANCE (FORTNIGHT BASIS) | |
|--|-------|--|-------|
| STOCK NAME | % UP | STOCK NAME | % UP |
| BOMDYEING | NP | TATAMOTORS | 33.70 |
| EDL | 23.33 | BANKRAJAS | 44.65 |
| ORCHIDCHEM | 11.45 | BHARATFORG | 48.25 |
| ONMOBILE | 6.80 | ADSL | 26.15 |
| ATFL | 34.10 | BHUSHANSTEE | 34.80 |
| ARCHIES | 21.10 | GESHIP | 12.20 |
| DCB | 8.33 | NALCO | 11.97 |

SWING TRADE/PORTFOLIO MANAGEMENT

WE ARE GIVING THESE STOCKS FOR THOSE WHO WANT TO TAKE SWING TRADE. IF NIFTY OR MARKET SUPPORTS US THEN THESE STOCK WOULD GO FAST AMONGST THE LARGE CAP.

THESE STOCKS ARE GIVEN SECTOR WISE. THESE STOCKS WHICH HAVE ALREADY TAKEN BREAKOUT OR GOING TO TAKE BREAKOUT AND THERE ARE SUBSTANTIAL PROVISION TO GO UP. SO YOU HAVE TO BUY ABOVE OR NEAR AT OUR BREAKOUT LEVEL AND YOU HAVE TO BOOK YOUR PROFIT AT OUR GIVEN TARGETS KEEPING THE GIVEN STOP LOSS.

AUTO SECTOR

| SCRIPS | BREAKOUT | TARGET 1 | TARGET 1 | TARGET 1 | STOPLOSS |
|-----------|----------|----------|----------|----------|----------|
| M&M | 780 | 814 | 850 | ? | 748 |
| MARUTI | 1375 | 1445 | 1484 | ? | 1348 |
| HEROHONDA | 1460 | 1525 | 1585 | ? | 1426 |

BANK SECTOR

| <i>SCRIPS</i> | <i>BREAKOUT</i> | <i>TARGET 1</i> | <i>TARGET 1</i> | <i>TARGET 1</i> | <i>STOPLOSS</i> |
|------------------|-----------------|-----------------|-----------------|-----------------|-----------------|
| <i>AXISBANK</i> | 865 | 897 | 927 | ? | 838 |
| <i>ICICIBANK</i> | 735 | 760 | 785 | ? | 714 |
| <i>KOTAKBANK</i> | 708 | 730 | 758 | ? | 686 |

IT SECTOR

| <i>SCRIPS</i> | <i>BREAKOUT</i> | <i>TARGET 1</i> | <i>TARGET 1</i> | <i>TARGET 1</i> | <i>STOPLOSS</i> |
|----------------|-----------------|-----------------|-----------------|-----------------|-----------------|
| <i>TCS</i> | 508 | 835 | 552 | ? | 495 |
| <i>HCLTECH</i> | 265 | 285 | 304 | ? | 258 |
| <i>INFOSYS</i> | 2025 | 2065 | 2085 | ? | 1996 |

CEMENT SECTOR

| <i>SCRIPS</i> | <i>BREAKOUT</i> | <i>TARGET 1</i> | <i>TARGET 1</i> | <i>TARGET 1</i> | <i>STOPLOSS</i> |
|---------------|-----------------|-----------------|-----------------|-----------------|-----------------|
| <i>ACC</i> | 780 | 810 | 827 | ? | 753 |

REALITY SECTOR

| <i>SCRIPS</i> | <i>BREAKOUT</i> | <i>TARGET 1</i> | <i>TARGET 1</i> | <i>TARGET 1</i> | <i>STOPLOSS</i> |
|------------------|-----------------|-----------------|-----------------|-----------------|-----------------|
| <i>DLF</i> | 382 | 397 | 408 | ? | 368 |
| <i>HDIL</i> | 282 | 295 | 305 | ? | 270 |
| <i>IBREALEST</i> | 247 | 258 | 267 | ? | 237 |

ALL TEA STOCKS ARE LOOKING HOT

TRADING SPOTLIGHT
SHORT TERM CALLS

ABB,SOBHA,ANSALINFRA,ASTRAMICRO,APARIND,ENIL,VOLTAMP

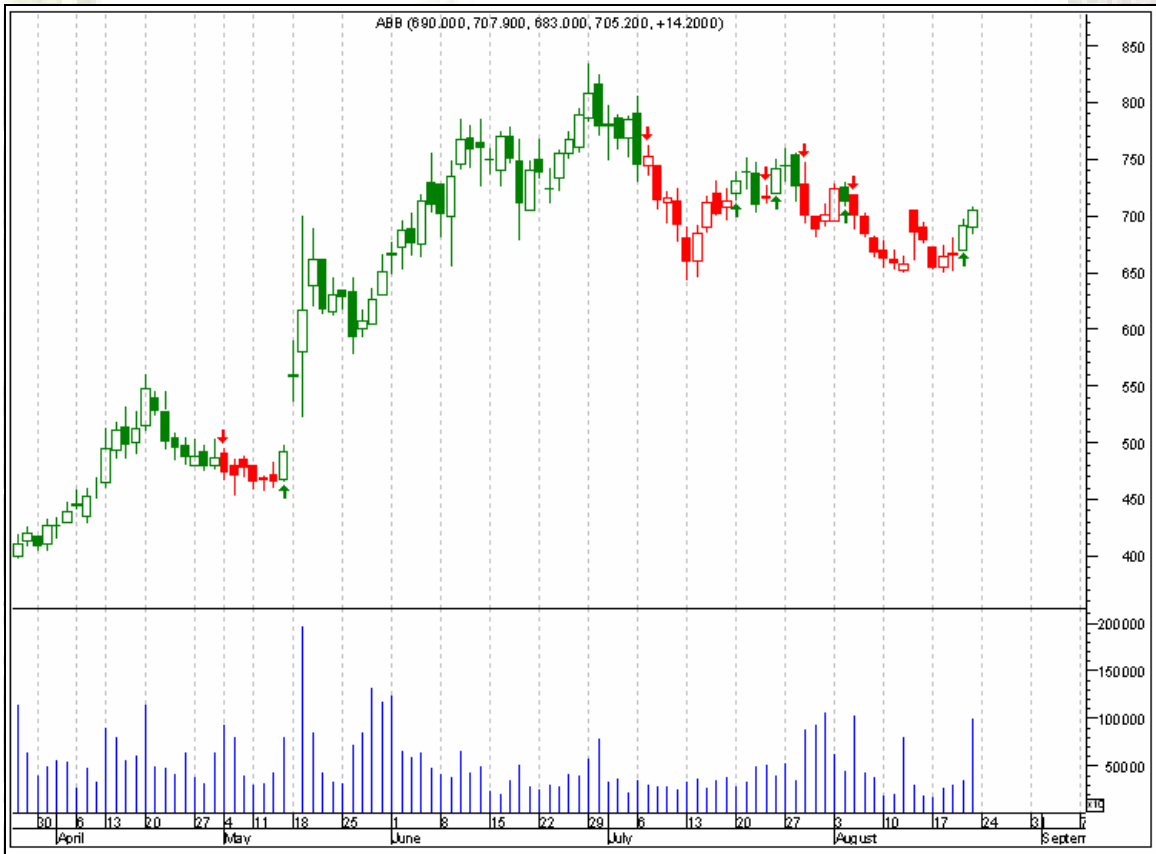
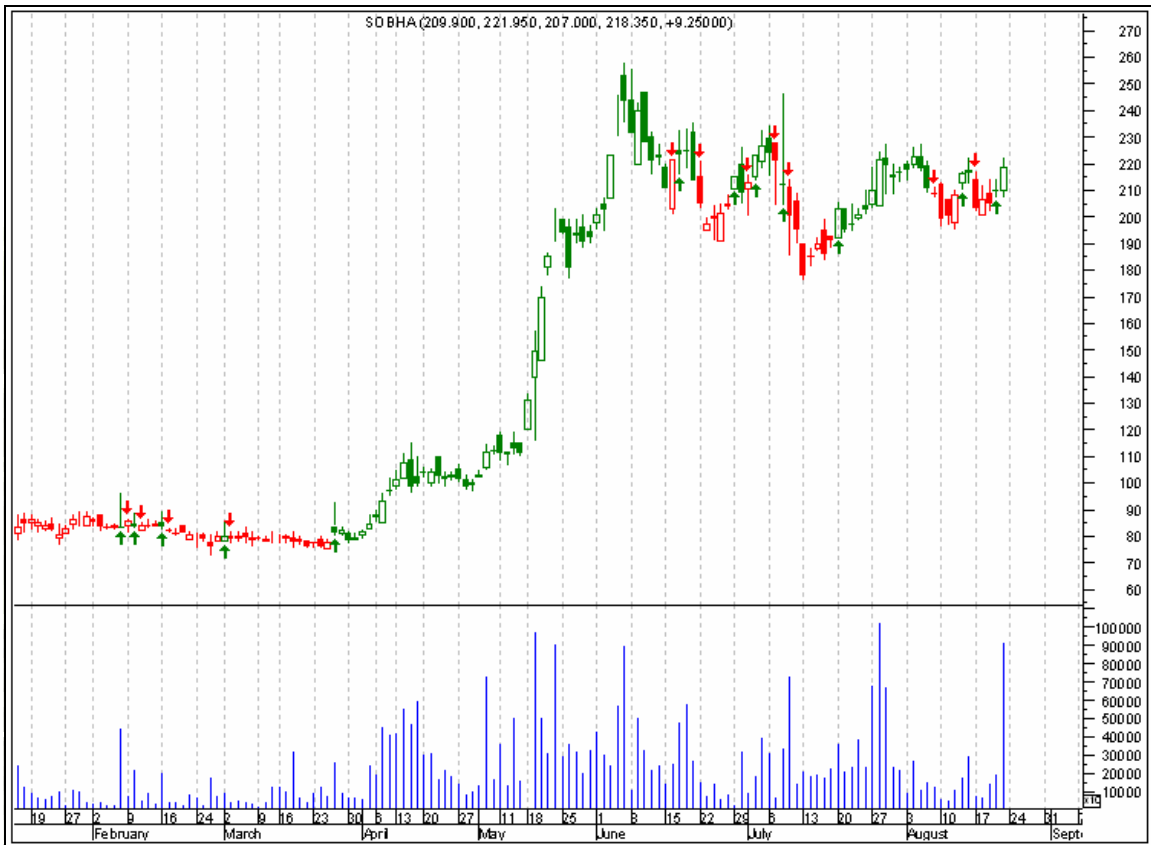


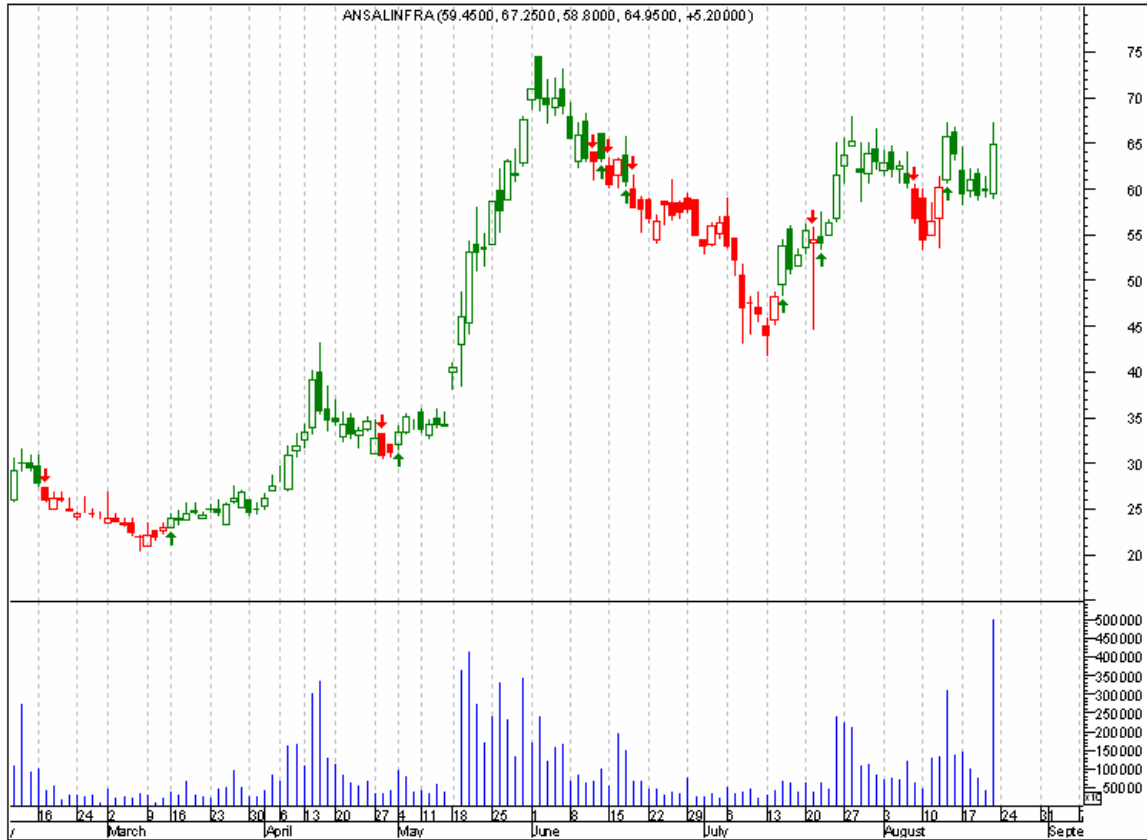
ABB - THE TREND DECIDER POINT IS 696 ZONE.SO ABOVE WHICH BUYING WILL ATTRACT AND FOR UPMOVE THE STOCK CAN GO UPTO 730.CLOSING ABOVE 730 THE STOCK CAN JUMP UPTO750-760.?? THE STOP LOSS SHOULD BE 670.





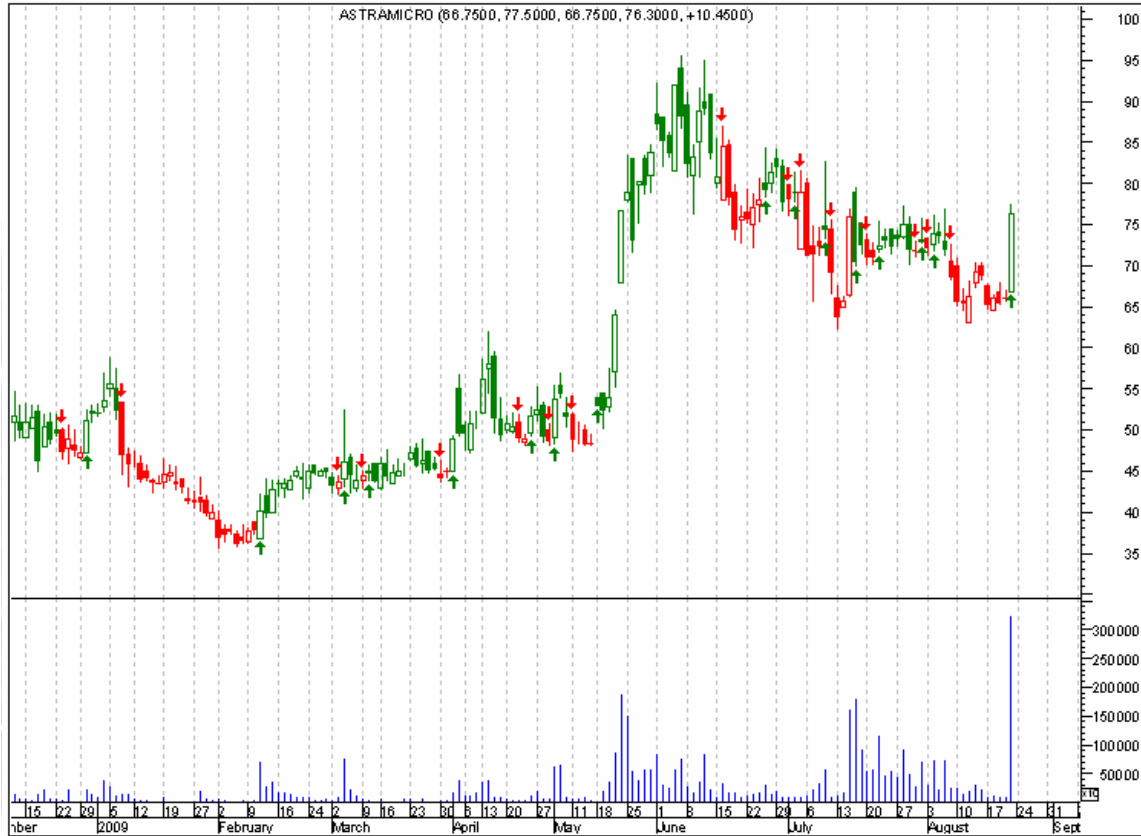
SOBHA - AFTER A LONG CONSOLIDATION THIS STOCK CLOSED IN A POSITIVE NOTE.ON WEEKLY BASIS THE TREND DECIDER POINT IS 214.SO YOU HAVE TO BUY THE STOCK ABOVE 214 WITH A STOP LOSS 206 AND IN UPPER SIDE, LEVEL TO WATCH 227..TRADE ABOVE 230 STOCK WILL KISS 247.260.? LEVELS.





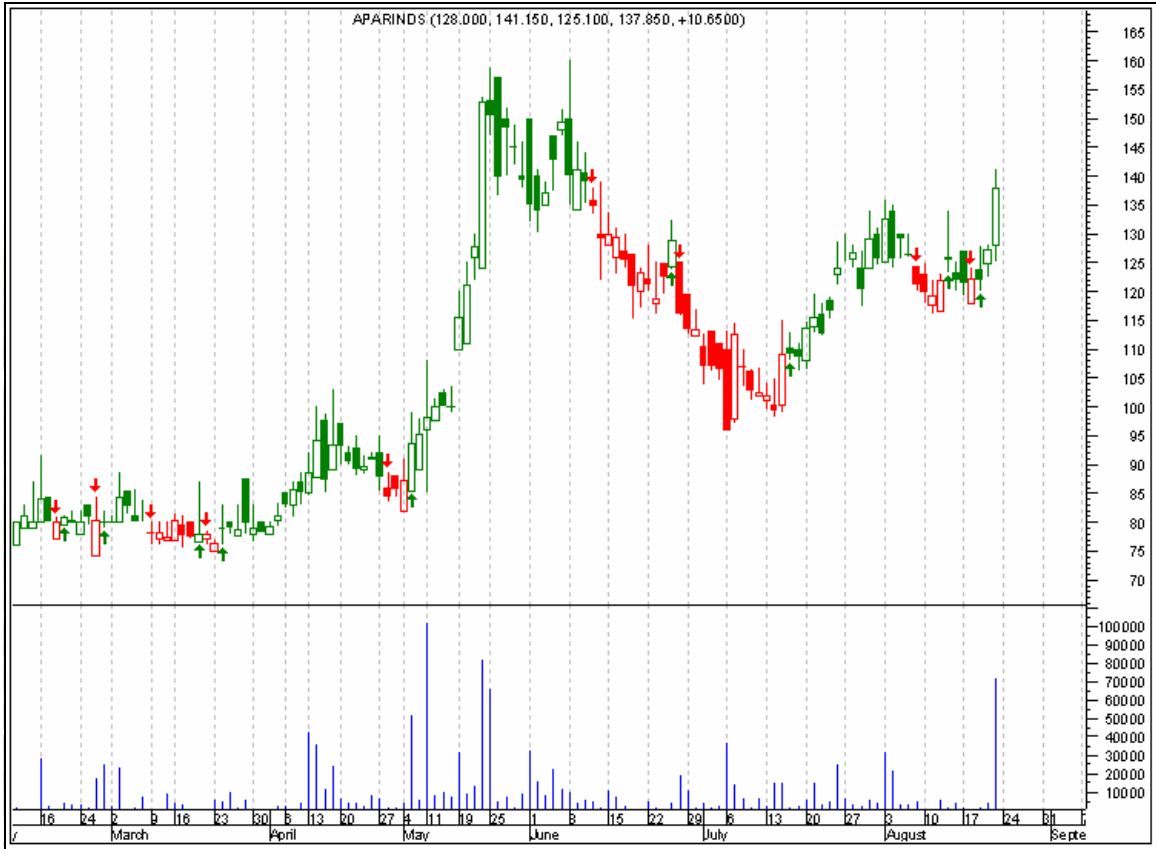
ANSALINFRA - FOR TRADING POINT OF VIEW 62 IS GOOD BUYING ZONE WITH A STOP LOSS 58.FOR UPER SIDE THE STOCK CAN GO UP TO 68..TRADE ABOVE 68 THE STOCK CAN KISS 73.78.?





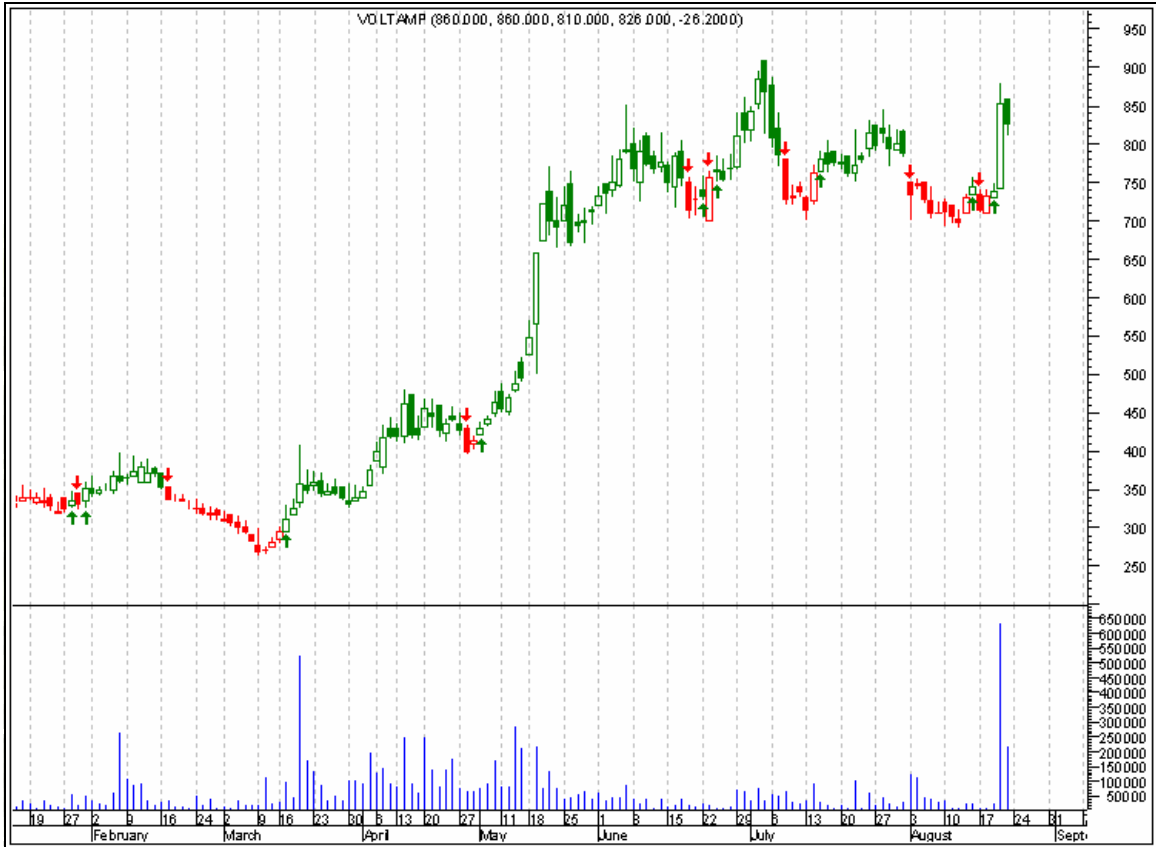
ASTRAMICRO --THE TREND DECIDER POINT IS 76.SO BUY ABOVE 76 AND YOUR STOP LOSS SHOULD BE 72 FOR INTRADAY PURPOSE.FOR DELIVERY PURPOSE BUY AROUND 72 LEVELS WITH A STOP LOSS 66..FOR UPSIDE RALLY YOUR SELLING LEVEL SHOULD BE 80 .MIND IT ANY CLOSING ABOVE 80 LEVEL THIS STOCK WOULD GET EXTRA MOMENTUM AND LEVEL TO WATVH 84.91??.





APARINDS - FOR TRADING POINT OF VIEW 130-135 IS GOOD BUYING ZONE WITH A STOP LOSS 125.FOR UPER SIDE THE STOCK CAN GO UP TO 141.152??.





VOLTAMP - THIS STOCK TOOK A BREAKOUT.GOOD BUYING ZONE IS 782-795 ZONE WITH A STOP LOSS 756 .FOR UPMOVE 860.880.910.??





ENIL – 192-197 IS GOOD BUYING ZONE WITH A STOP LOSS 180 .FOR UPMOVE 208 .TRADE ABOVE 212 THERE IS A POSSIBILITY THAT THIS STOCK CAN GO UP TO 225-230.? LEVELS.

NOTE

CAUTION

ALL THESE LEVELS ARE VALID AND BUYING IS ALLOWED UNTIL NIFTY ABOVE 4380 LEVEL.



WHY YOU JOIN WITH “ISMTEM”

- 1 WE WILL TRY OUR BEST TO MAKE YOU PROFIT.**
- 2 WE WILL PROVIDE OUR SERVICE AT AFFORDABLE PRICE.**
- 3 YOU WILL GET MARKET MOVEMENT OR NIFTY SUPPORTS AND RESITANCE DAILY TO MAKE YOU UNDERSTAND MARKET CONDITION.**
- 4 AT OPENING YOU WILL GET INTRADAY STOCK WITH BUYING AND SELLING /TARGET LEVEL AND WITH STOP LOSS.**
- 5 DURING MARKET, YOU WILL GET NIFTY ALERT AND STOCK MOVEMENT/CALLS.**
- 6 AT THE END YOU WILL GET BTST CALLS.**
- 7 YOU WILL GET SHORT TERM DELIVERY CALLS IN OUR JOURNAL.**
- 8 IF YOU WANT TO BUY/SELL ANY STOCK THEN MAIL US AND WE WILL GUIDE YOU INSTANTLY WITH BUYING AND SELLING LEVEL.**

DON'T WORRY,WE ARE WITH YOU TO GUIDE YOU BEST



HAPPY TRADING AHEAD



ISM TEAM

DISCLAIMER-(READ CAREFULLY BEFORE INVESTING) - Trading involves considerable risk. Trade at your own risk to the extent you are comfortable. The analyst and this site will not be responsible or liable for any losses incurred for acting on these recommendations.writers may have their own position on the stock so recommended