

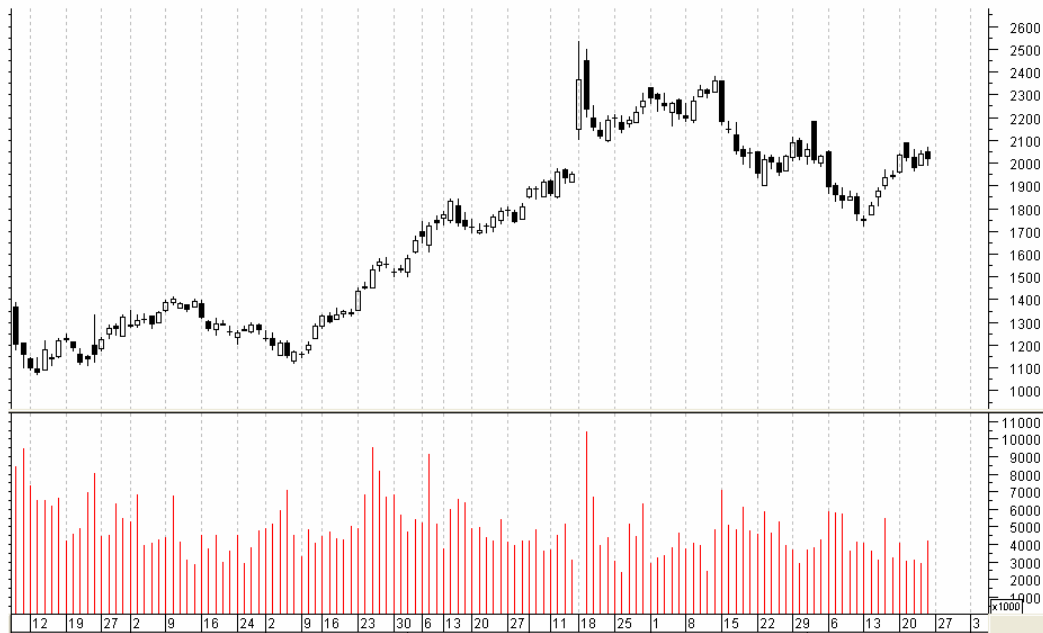
Caution: Please note that your copy/access to our website is for your exclusive use only. Any attempt to share your access to our website or forwarding your copy to a non-subscriber will disqualify your membership and we will be compelled to stop your supply and forfeit your subscription thereafter without any refund to you.

GLOBAL INDICES

SENSEX	15,378.96	+147.92	+0.97%
NIFTY	4,568.55	+44.80	+0.99%
HANG SENG	19,982.79	+165.09	+0.83%
NIKKEI 225	9,944.55	+151.61	+1.55%
FTSE 100	4,576.61	+16.81	+0.37%
NASDAQ	1,965.96	-7.64	-0.39%
DOW JONES	9,093.24	+23.95	+0.26%
DAX	5,229.36	-17.92	-0.34%
CAC 40	3,366.45	-7.27	-0.22%

NIFTY CHART (WEEKLY VIEW)





RELIANCE- THE RESULT OF RELIANCE, MOSTLY IN REFINING SEGMENT IS QUITE UNSATISFACTORY AND FOR THIS THE STOCK MAY BEHAVE NEGATIVELY. HOWEVER THE RESULT IS QUITE DISCOUNTED. AS WE ARE TECHNICAL ANALYST WE WOULD NOT DISCUSS ABOUT THE RESULT BUT THE LEVELS WHICH WILL HELP YOU TO DECIDE THE MOVEMENT OF RELIANCE AND THE MARKET AS WELL.

THE FIRST SUPPORT OR THE TREND IS 1985 TRADE BELOW IT YOU CAN EASILY UNDERSTAND THE STOCK WILL COME LOWER SIDE AND IT WILL KISS 1925-1950 LEVELS. HOWEVER LAST HOPE FOR RELIANCE IS 1880. FOR UP MOVE RELIANCE NEED TO TRADE/CLOSE ABOVE 2070.

NIFTY

DATE – 27th JULY 2009 TO 31st JULY 2009:- IN THE LAST WEEK NIFTY MANAGED TO CLOSE ABOVE DANGER LEVEL AND MADE A HIGH AROUND 4580 AND FINALLY CLOSED AT 4568.55. BUT THE QUESTION IS THAT THIS UPRAILY WOULD BE SUSTAINABLE OR NOT

.THE ANSWER IS PROBABLY NOT SUBJECT TO RELIANCE'S MOVEMENT. SO WE HAVE TO UNDERSTAND THE MOVEMENT OF RELIANCE WHICH DECIDE THE MOVMENT OF MARKET.FIRST UNDERSTAND THE NIFTY SUPPORTS AND RESISTANCE.

RESISTANCE

ON WEEKLY BASIS THE NIFTY IS IN A RANGE OF 4436 TO 4612 .IN NEAR DAY NIFTY RESIST AT 4636.4693 ZONE.UNLESS NIFTY CLOSE ABOVE 4612 NIFTY WOULD NOT GET EXTRA MOMENTUM AND DOWNTREND WILL STARTS.

TREND DECIDER

TREND DECIDER MEANS A CERTAIN LEVEL ABOVE WHICH MARKET LOOKS GOOD (APPARENTLY BUT NOT CONFIRMED) AND BELOW WHICH MARKET LOOKS BAD (APPARENTLY BUT NOT CONFIRMED). NIFTY TREND IS 4480.ABOVE WHICH UPTREND IS INTACT AND PEOPLE LIKE TO BUY ON DIPS BUT BELOW IT PEOPLE ARE NOT INTERESTED TO BUY ,THEREFORE MARKET LOSES ITS MOMENTUM.

SUPPORTS

IN THE LOWER SIDE NIFTY GOOD SUPPORT AT 4480 ,4436,4380. BREAK BELOW OR CLOSING BELOW 4305 LEVEL MARKET LOKELY TO TEST 4230 LEVEL.MIND IT ANY CLOSING BELOW 4230 TAKE THE MARKET DOWN TREND AND IT IS MATTER OF CONCERN.

SUMMERY

Market trading range – 4436-4612.

For upmove confirmation closing needed above 4612 zone.

For down side confirmation closeing below 4436 zone.

Profit booking zone 4532-4590. zone with a stop loss 4612.

Buying zone 4405 zone with a stop loss 4380.

READ CAREFULLY

WE ARE NOT YET CONFIRMED THAT BULL MARKET HAS ALREADY BEEN STARTED OR NOT BUT THE CHART (IF GLOBAL CUES SUPPORTS US) SHOWS THAT MARKET LIKELY TO TEST 5230 ZONE SUBJECT TO CERTAIN CONDITIONS-

- 1) MARKET HAS TO MANAGE THE SHORT TERM CORRECTION THAT WILL OCCUR DUE TO RELIANCE'S DISAPPOINTMENT RESULT.**
- 2) NIFTY WILL NOT BREAK THE LEVEL OF 4200 BY CLOSING FOR TWO DAYS.**
- 3) AS MARKET IS IN OVERBOUGHT POSITION SHORT TERM CORRECTION LIKELY TO HAPPEN THIS WEEK SO WE WILL BUY ON DIPS WITH A STOP LOSS OF 4200(FOR STOCK PURPOSE).**

TRADING STYLE OF MOST WANTED STOCKS (WEEKLY VIWE)

SL	STOCKS NAME	TRADING RANGE	BREAKOUT LEVEL	BREAKDOWN LEVEL
1	CHAMBL	50-60	62	48
2	CVKPIIL	41-45	46	40
3	HCC	104-115	118	100
4	IFCI	45-52	46	43
5	JPASSOCIAT	214-243	245	212
6	JPHYDRO	84-78	85	76
7	NAGARFERT	32-45	46	30
8	RPL	122-129	130	120
9	RNRL	77-84	85	76
10	ROLTA	129-142	145	125
11	SAIL	164-175	176	162
12	SATYAM	110-90	112	88
13	SESAGOA	224-241	243	220
14	SUZLON	94-105	106	88
15	UNITECH	78-88	90	76

NB--- THE SUPPORTS AND RESISTANCE GIVEN ON WEEKLY BASIS.REMEMBER THE CONDITIONS-

- 1) BREAKOUT AND BREAKDOWN VALID FOR CLOSING BASIS.
- 2) WE ARE NOT GOING TO RECOMMEND THIS STOCK TO INVEST , JUST MANAGE YOUR STOCKS IF YOU HAVE FOLLOWING THE LEVEL GIVEN.
- 3) BREAKOUT AND BREAKDOWN SUBJET TO NIFTY CONDITION THAT MEANS IF NIFTY IS IN BREAKDOWN LEVEL BUT STOCK IS IN BREAKOUT LEVEL ,THEN THE BREAKOUT WOULD NOT BE VALID AND VICE VERSA

TRADING SPOTLIGHT

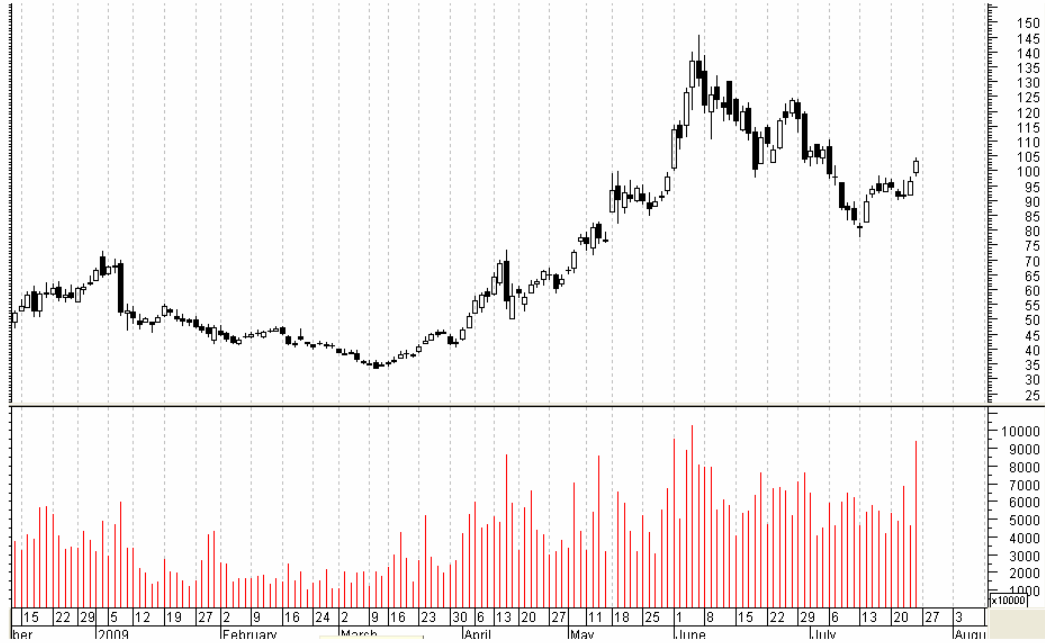
LITL, TATAMOTORS, SUZLON, BANKRAJAS,MLL, BHARATFORG,EDUCOMP



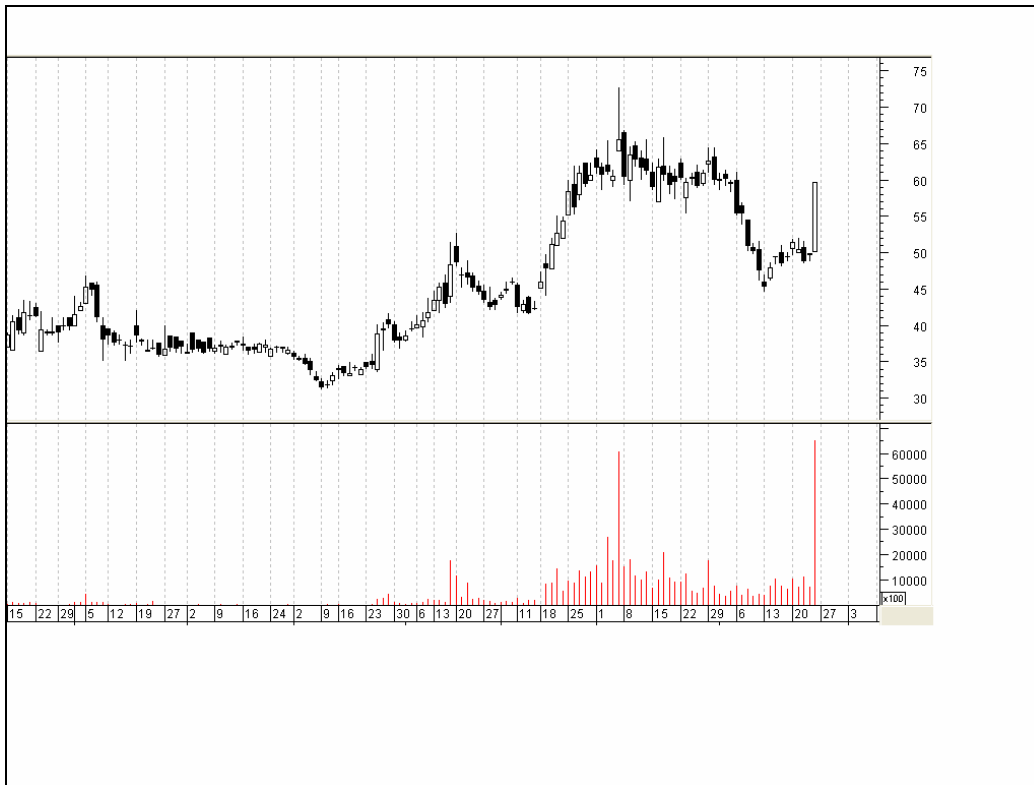
LITL- THE TREND DECIDER POINT IS 402 ZONE.SO ABOVE WHICH BUYING WILL ATTRACT AND FOR UPMOVE THE STOCK CAN GO UPTO 422.432.450.? SO YOU HAVE TO BUY ON DIPS LIKE 380-390.YOU MAY BUY THIS STOCK AT 402 LEVEL BUT YOU TRY TO BUY ON DIPS TO MINIMISE YOUR STOP LOSS AND YOUR STOP LOSS IS 364.



TATAMOTORS - AFTER A LONG CONSOLIDATION THIS STOCK CLOSED IN A POSITIVE NOTE.ON WEEKLY BASIS THE TREND DECIDER POINT IS 353 WITH A STOP LOSS 340 AND IN UPPER SIDE, LEVEL TO WATCH 378.TRADE ABOVE 382 STOCK WILL KISS 403 LEVEL. IF THIS STOCK BREAK 340 LEVEL THEN NEXT BUYING ZONE IS 320 WITH A STOP LOSS 306. AMONGST THE AUTO SECTORS ASHOKLEY AND AMTECH AUTO IS ALSO LOOKING HOT.



SUZLON-THE TREND DECIDER POINT IS 98.SO GOOD BUYING ZONE 98 AND YOUR STOP LOSS SHOULD BE 95.FOR UPSIDE RALLY YOUR SELLING LEVEL SHOULD BE 110.MIND IT ANY CLOSING ABOVE 111 LEVEL THIS STOCK WOULD GET EXTRA MOMENTUM AND LEVEL TO WATCH 119.IF YOU GET THE STOCK AT LOWER LEVEL LIKE 90 THEN YOU HAVE TO KEEP YOUR STOP LOSS 86.



BANKRAJAS- FOR THIS STOCK- INTRADAY PURPOSE ABOVE 60 IT WILL KISS 65 LEVEL BUT FOR TRADING POINT OF VIEW 52 IS GOOD BUYING ZONE WITH A STOP LOSS 48.



MLL- 58 IS GOOD BUYING ZONE WITH A STOP LOSS 54.FOR UPMOVE 65.70.THIS WEEK THE SHIPPING SECTOR MAY PERFORM ,SO CLOSE EYE ON OTHER STOCK ALSO LIKE , GESHIP ETC.



BHARATFORG- THIS STOCK TOOK A ABSOLUTE BREAKOUT.GOOD BUYING ZONE IS 160-170 ZONE WITH A STOP LOSS 150.FOR UPMOVE 185.198.?



EDUCOMP- THIS STOCK IS QUITE RISKY AND ABOVE 4150 BUYING IS ONLY ALLOWED AND STOP LOSS IS 4070.FOR UPMOVE 4400.4600.DONT TRY TO BUY ON DIPS.

CAUTION-- ALL THIS LEVEL IS VALID AND BUYING IS ALLOWED UNTIL FIFTY ABOVE 4436 LEVEL.

HAPPY TRADING AHEAD

From----

ISM TEAM