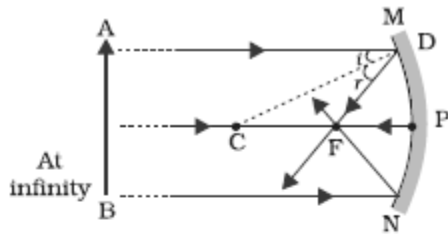
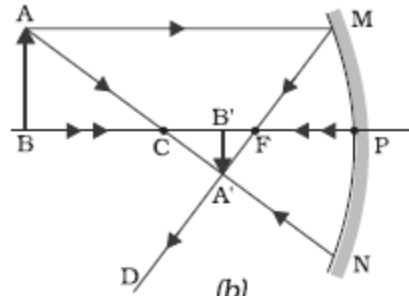


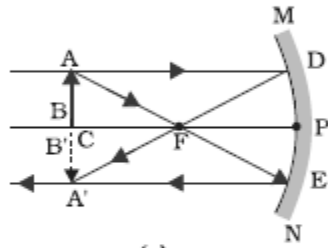
Important Diagrams



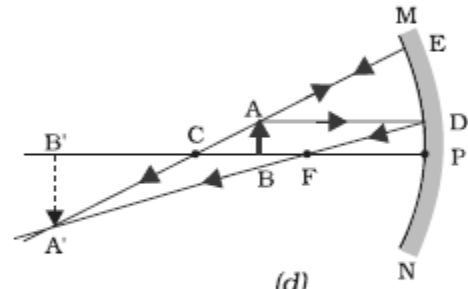
(a)



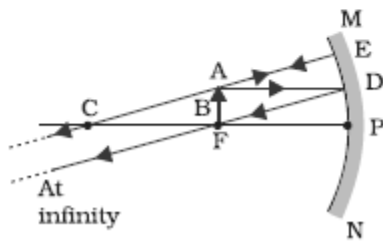
(b)



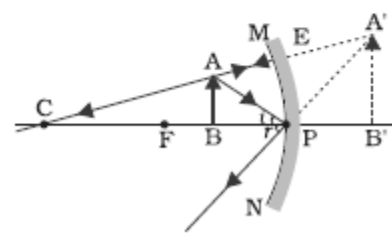
(c)



(d)

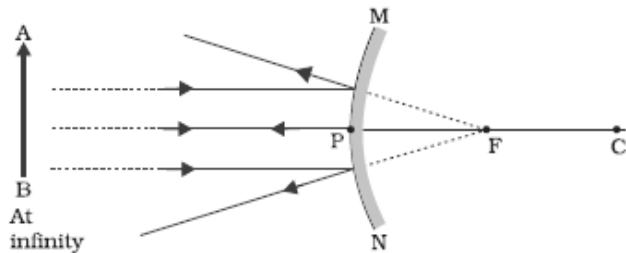


(e)

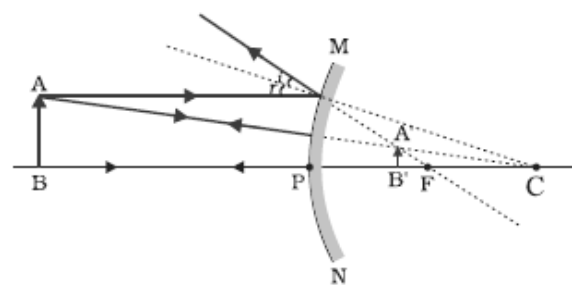


(f)

Ray diagrams for the image formation by a concave mirror



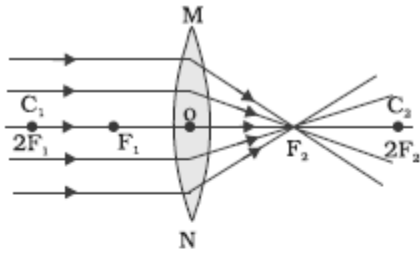
(a)



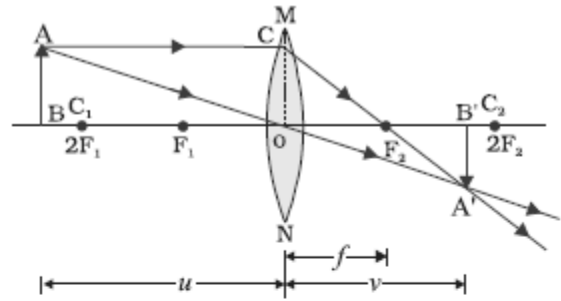
(b)

Formation of image by a convex mirror

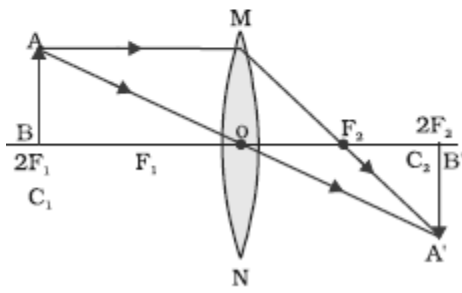
Important Diagrams



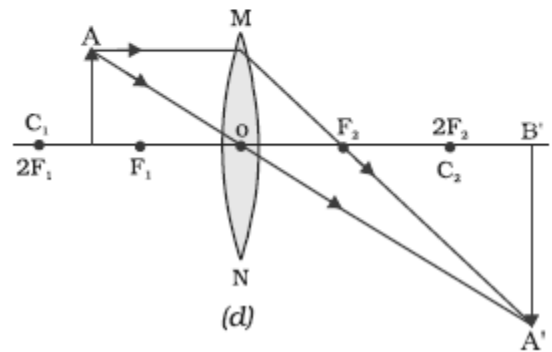
(a)



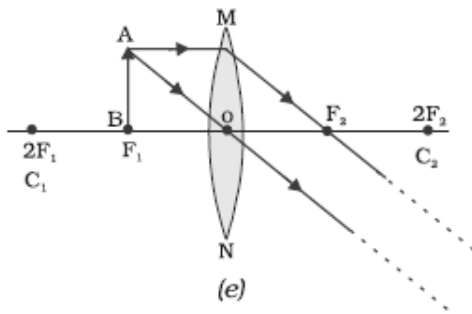
(b)



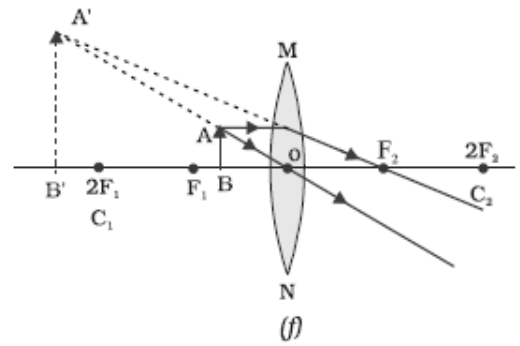
(c)



(d)

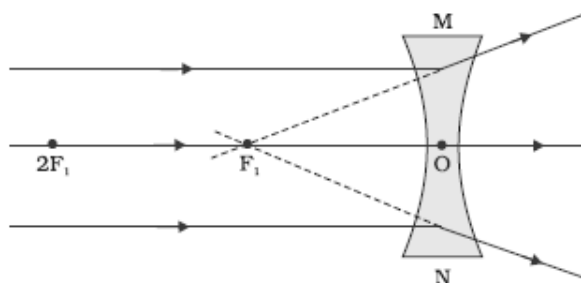


(e)

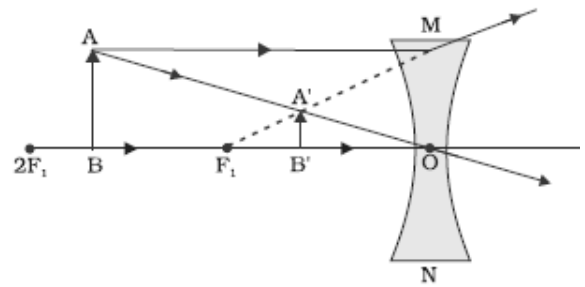


(f)

The position, size and the nature of the image formed by a convex lens for various positions of the object



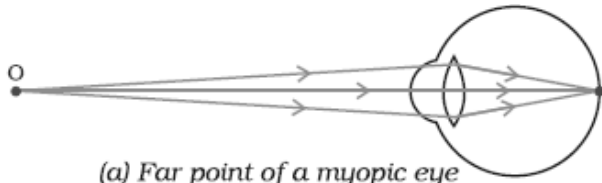
(a)



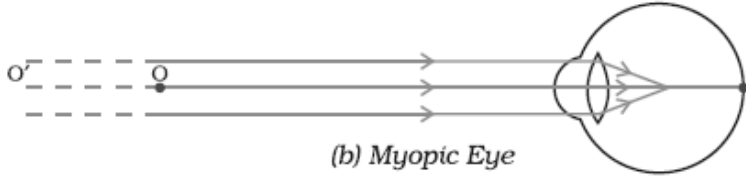
(b)

Nature, position and relative size of the image formed by a concave lens

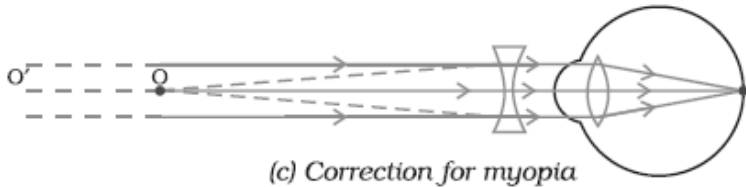
Important Diagrams



(a) Far point of a myopic eye

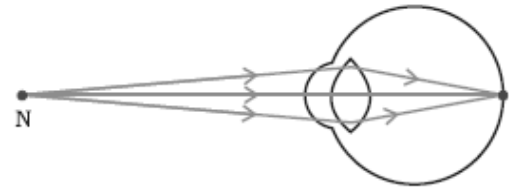


(b) Myopic Eye

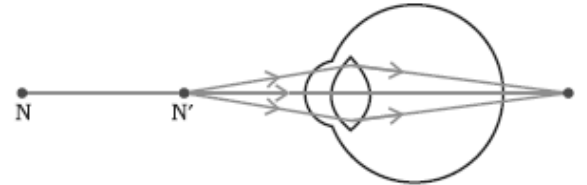


(c) Correction for myopia

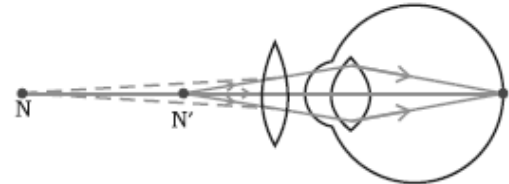
(a), (b) The myopic eye, and (c) correction for myopia with a concave lens



(a) Near point of a Hypermetropic eye

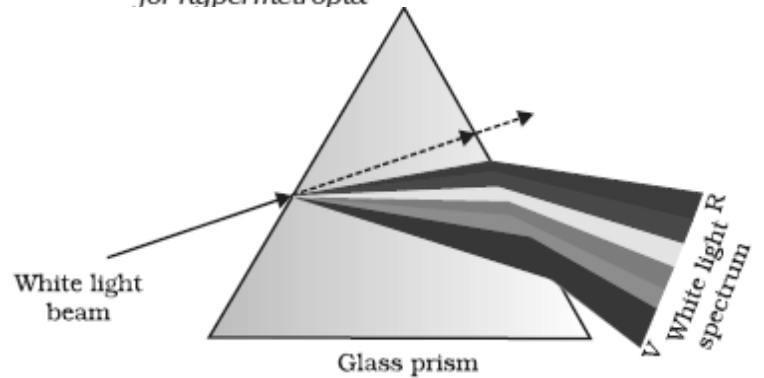
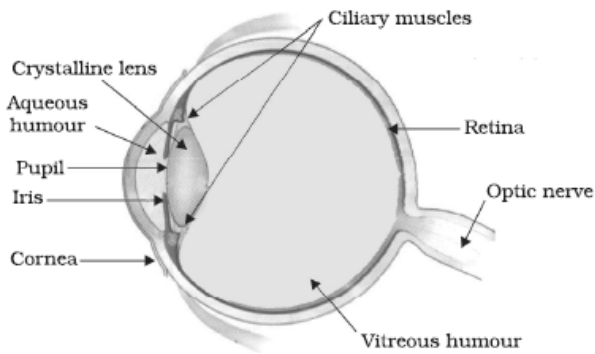


(b) Hypermetropic eye

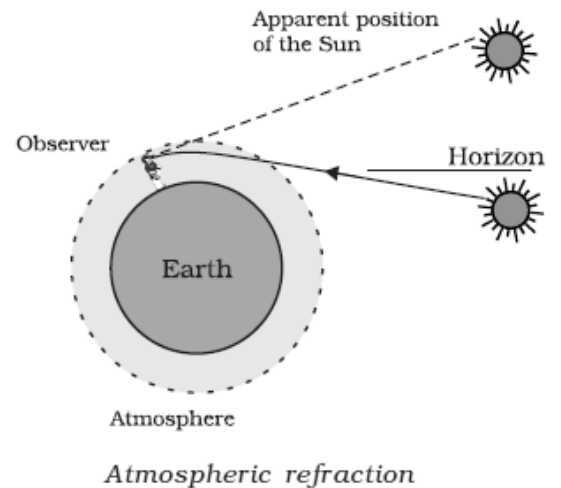
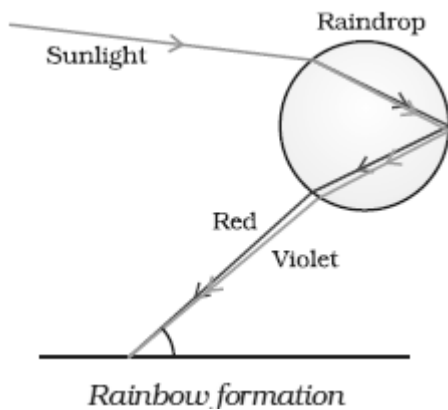


(c) Correction for Hypermetropic eye

(a), (b) The hypermetropic eye, and (c) correction for hypermetropia

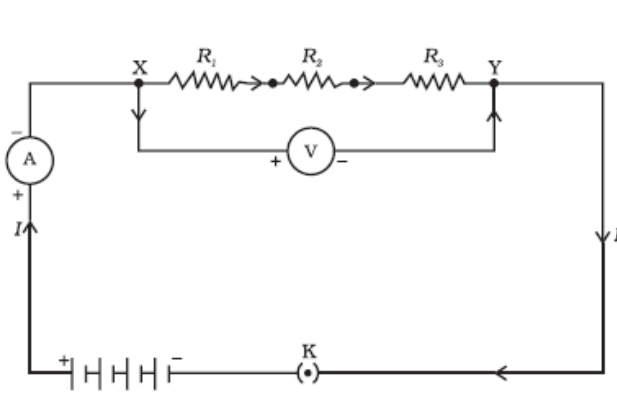


Dispersion of white light by the glass prism

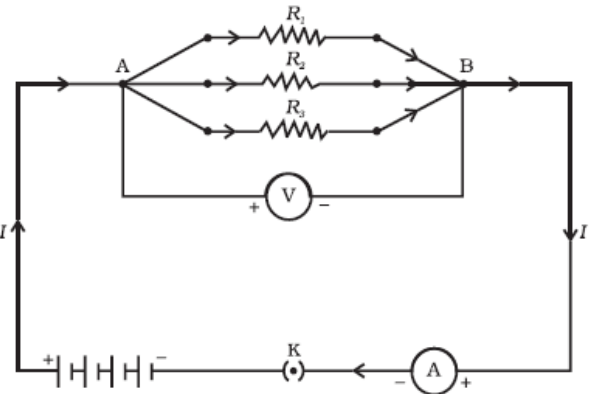


Atmospheric refraction

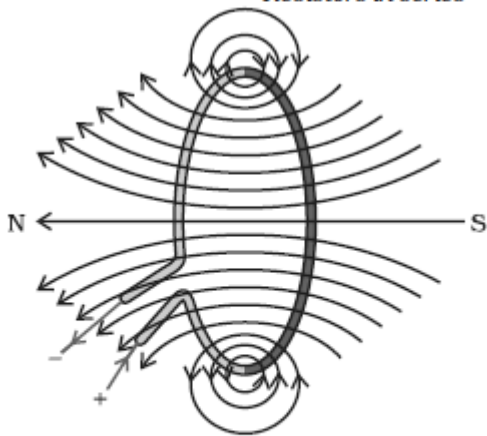
Important Diagrams



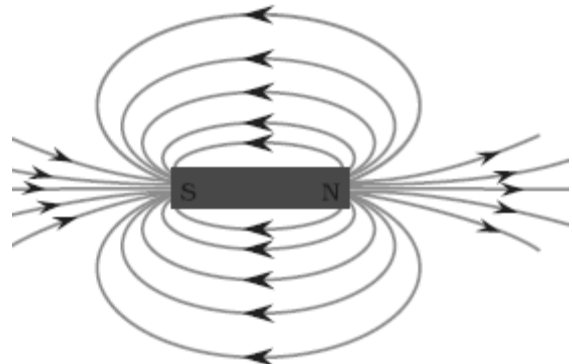
Resistors in series



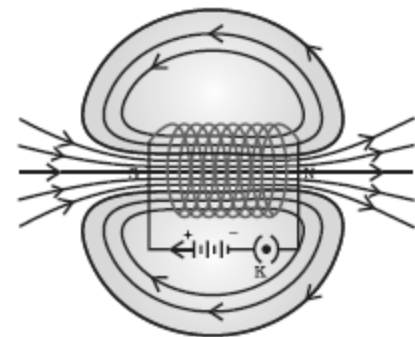
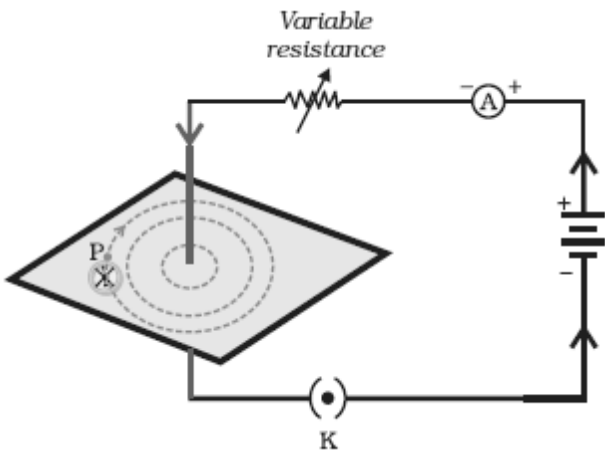
Resistors in parallel



Magnetic field lines of the field produced by a current-carrying circular loop

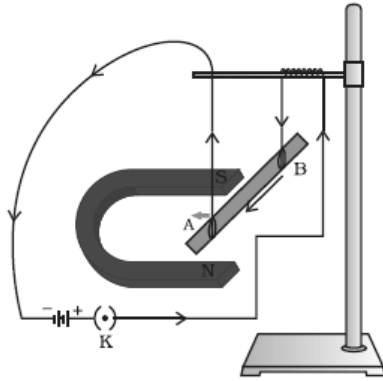


Field lines around a bar magnet

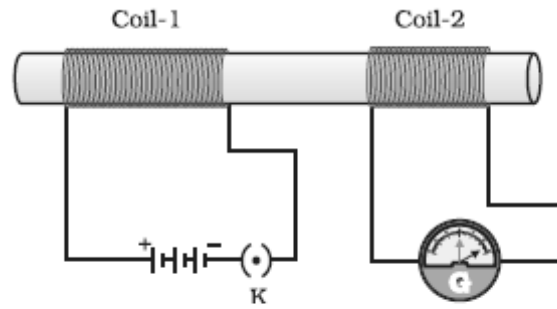


Field lines of the magnetic field through and around a current carrying solenoid.

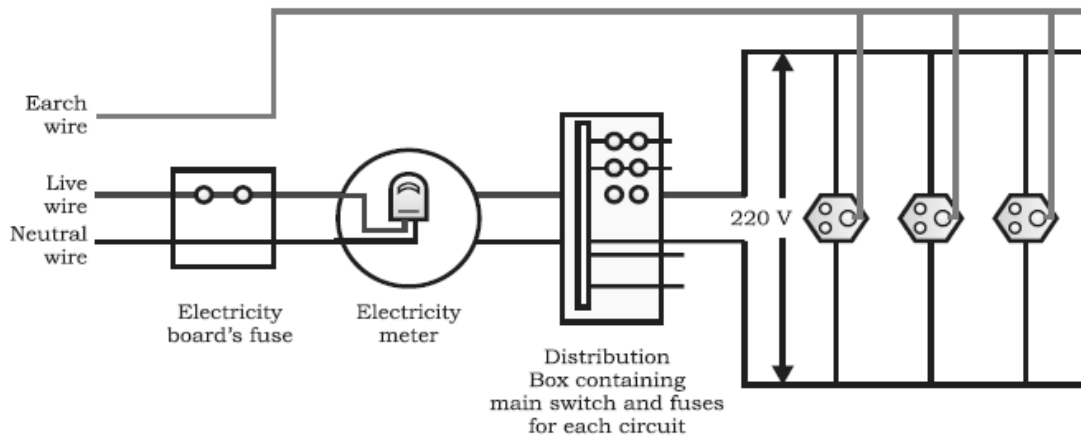
Important Diagrams



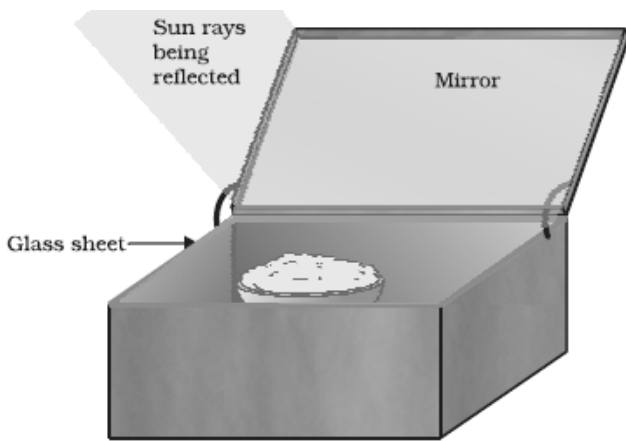
A current-carrying rod, AB, experiences a force perpendicular to its length and the magnetic field.



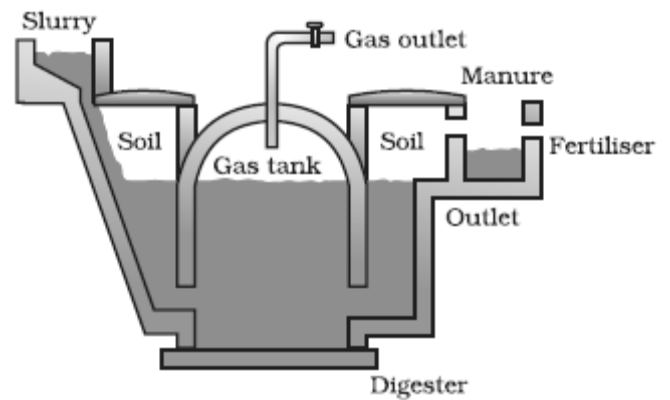
Current is induced in coil-2 when current in coil-1 is changed



A schematic diagram of one of the common domestic circuits



A solar cooker



Schematic diagram of a bio-gas plant